

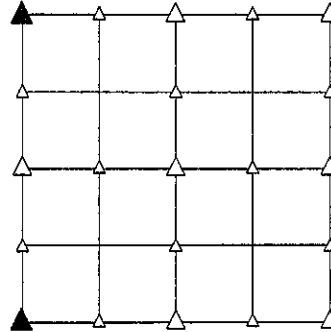
PREPARED BY - JOSEPH P. RUESCHENBERG - SUNDQUIST ENGINEERING - 120 S. MAIN, DENISON, IOWA 51442 - PHONE (712) 263-8118

**UNITED STATES PUBLIC LAND SURVEY CORNER CERTIFICATE  
 OF**

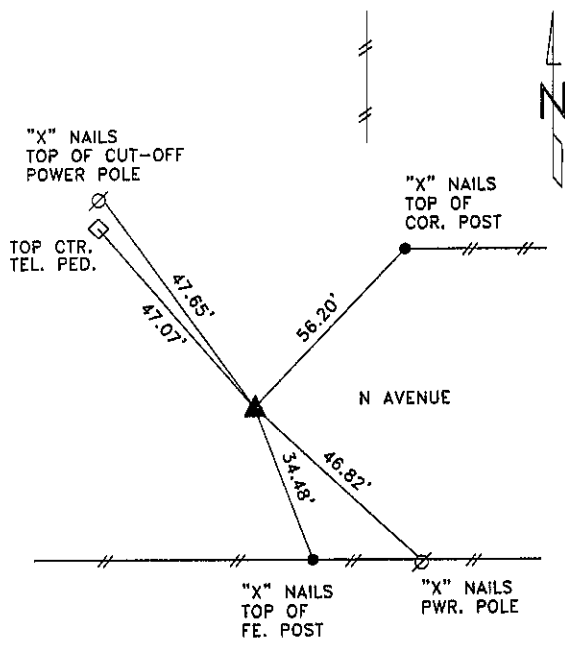
LAND SURVEY MONUMENT SITUATED IN SECTION 9, T 83 N, R 41 W OF  
 THE 5TH P.M., CRAWFORD COUNTY, IOWA.  
 PREVIOUSLY RECORDED IN BOOK \_\_\_\_\_, PAGE \_\_\_\_\_, OTHER \_\_\_\_\_

**MONUMENT DESCRIPTION AND REMARKS**

NW CORNER - FOUND BROKEN CM 2.3' DEEP W/PIECES OF BRICK  
 & 6" X 6" ROCK, RAISED WITH 5/8" DIA. X 18" IRON  
 PIN W/ORANGE CAP #14709 0.8' DEEP.  
 SW CORNER - SET 5/8" DIA. X 18" IRON PIN W/ORANGE CAP  
 #14709 0.6' DEEP, RESET FROM OLD COUNTY TIES.

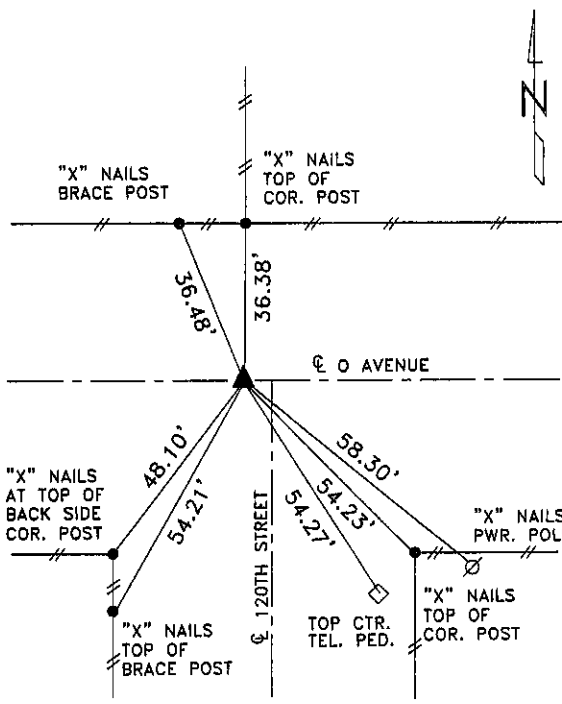


**PLAN VIEW SHOWING RELATIVE LOCATION OF MONUMENT AND REFERENCE POINTS.**



DISTANCES PLUMB CHAINED

NW CORNER SECTION 9-83-41



DISTANCES PLUMB CHAINED

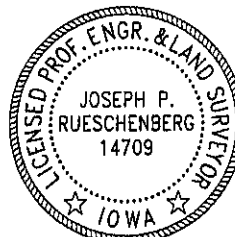
SW CORNER SECTION 9-83-41

I HEREBY CERTIFY THAT THIS LAND SURVEYING DOCUMENT WAS PREPARED AND THE RELATED SURVEY WORK WAS PERFORMED BY ME OR UNDER MY DIRECT PERSONAL SUPERVISION AND THAT I AM A DULY LICENSED LAND SURVEYOR UNDER THE LAWS OF THE STATE OF IOWA.

*Joseph P. Rueschenberg* **OCT 29 2007**  
 JOSEPH P. RUESCHENBERG DATE

IA LICENSE NO. 14709

EXP. DATE DECEMBER 31, 2008



SE PROJECT NO. 24907  
 DRAWN BY: LLL