

RECORDED  
 INDEXED  
 FILED  
 JUN 10 2008  
 CRAWFORD

WILKE LAND SURVEYING INC. 401 1800th Street Panama, Iowa 51562 (712)489-2898

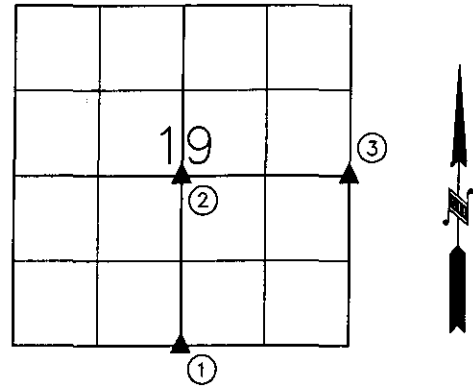
# UNITED STATES PUBLIC LAND SURVEY CORNER CERTIFICATE

SECTION 19 TOWNSHIP 83N RANGE 41W COUNTY CRAWFORD

Certificate Prepared For: Survey of LOT 1 of the NW1/4 SE1/4  
 (No Corner Certificates exist for these Corners)

**Monument Description and Remarks:**

- ① - No monument was set at this Corner as the WPA notes state. Set 5/8" dia. by 24" rebar w/orange cap PLS #17048 (0.5' deep) in a eroded gully on line with fence South and North but approx. 18' South of Corner Post for fence East. The fence at the top of hill East was held for line from the found SE Corner of Section 19 and the line was projected West to intersect with the North - South fence. The East fence clearly deflects Northwesterly as it comes West down the hill.
- ② - Set 5/8" dia. by 24" rebar w/orange cap PLS #17048 (0.3' deep) at the projected intersection of fences from the North and West.
- ③ - Dug for WPA monument but found nothing. Set 5/8" dia. by 24" rebar w/orange cap PLS #17048 (0.3' deep) at the center of road and in line with the fence West.



LICENSED LAND SURVEYOR

**DEAN A. WILKE**

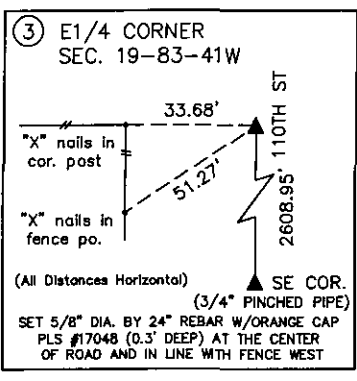
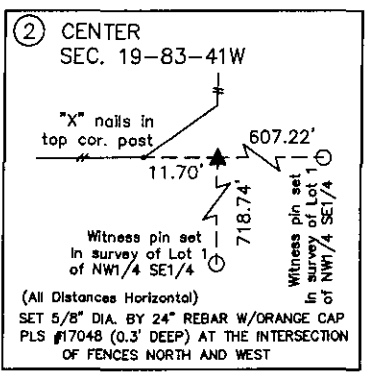
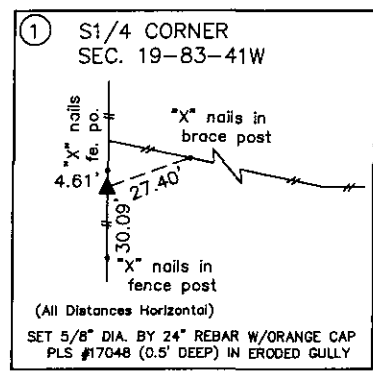
17048

IOWA

I hereby certify that this land surveying document was prepared and the related survey work was performed by me or under my direct personal supervision and that I am a duly licensed Land Surveyor under the laws of the State of Iowa.

*Dean A. Wilke* 6/06/08  
 Dean A. Wilke Date

License number 17048  
 My license renewal date is December 31, 2009  
 Pages or sheets covered by this seal: This page only



List Corners to be Indexed			
Corner	Section	Twp.	Range
S1/4 CORNER	19	83N	41W
CENTER	19	83N	41W
E1/4 CORNER	19	83N	41W