

INDEXED \_\_\_\_\_  
FOLLOW UP 2-7  
PROOFED \_\_\_\_\_  
SCANNED \_\_\_\_\_

Crawford County Recorder  
Denise Meeves  
**Fee Book 2010-1394**  
07/06/2010 @02:45PM  
PLC PLAT CORNER CBR  
Book: \_\_\_\_\_ Page: \_\_\_\_\_ # Pages: 1  
Total Fees: \$9.00

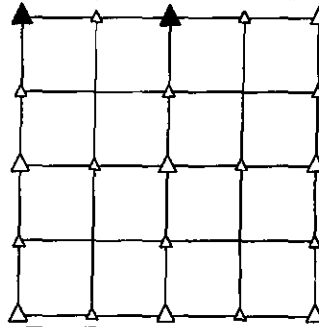
PREPARED BY - TERENCE E. CRAWFORD - SUNDQUIST ENGINEERING - 120 S. MAIN, DENISON, IOWA 51442 - PHONE (712) 263-8118

### UNITED STATES PUBLIC LAND SURVEY CORNER CERTIFICATE OF

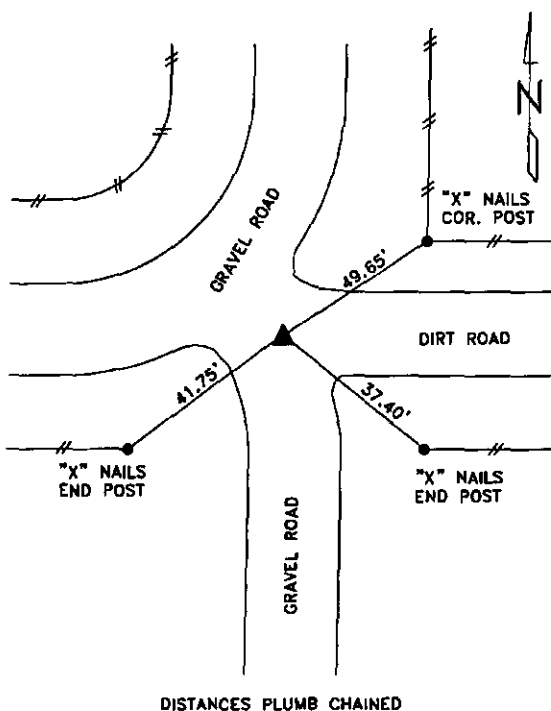
LAND SURVEY MONUMENT SITUATED IN SECTION 19, T 83 N, R 41 W OF  
THE 5TH P.M., CRAWFORD COUNTY, IOWA.  
PREVIOUSLY RECORDED IN BOOK \_\_\_\_\_, PAGE \_\_\_\_\_, OTHER \_\_\_\_\_

#### MONUMENT DESCRIPTION AND REMARKS

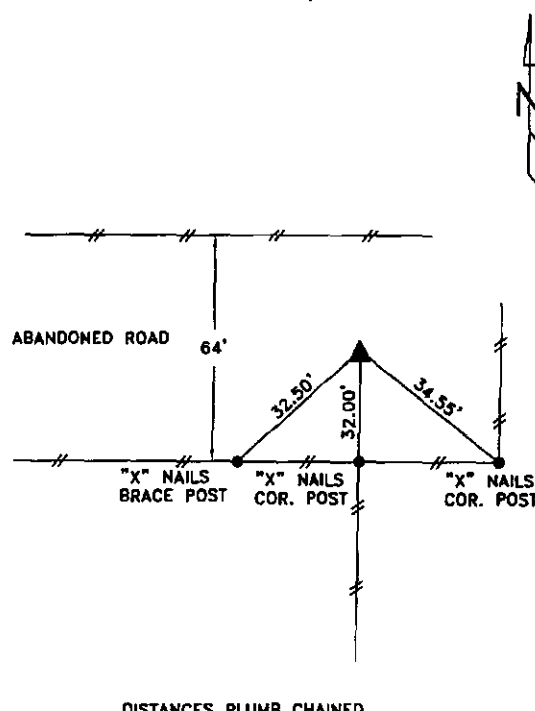
NW CORNER - SET 5/8" DIA. X 18" IRON PIN W/YELLOW CAP  
#8893 0.3' DEEP, SET FROM LOCAL EVIDENCES.  
N1/4 CORNER - SET 5/8" DIA. X 18" IRON PIN W/YELLOW CAP  
#8893 0.3' DEEP, RESET FROM OLD COUNTY TIES.



#### PLAN VIEW SHOWING RELATIVE LOCATION OF MONUMENT AND REFERENCE POINTS.



NW CORNER SECTION 19-83-41



N1/4 CORNER SECTION 19-83-41

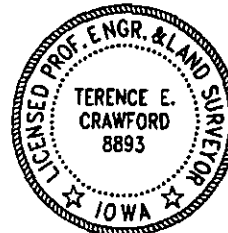
I HEREBY CERTIFY THAT THIS LAND SURVEYING DOCUMENT WAS PREPARED AND THE RELATED SURVEY WORK WAS PERFORMED BY ME OR UNDER MY DIRECT PERSONAL SUPERVISION AND THAT I AM A DULY LICENSED LAND SURVEYOR UNDER THE LAWS OF THE STATE OF IOWA.

*Terence E. Crawford*

JUN 07 2010

TERENCE E. CRAWFORD  
IA LICENSE NO. 8893

DATE  
EXP. DATE DECEMBER 31, 2011



SE PROJECT NO. 21010  
DRAWN BY: LLL