

INDEX SM / DM
 SCAN DM
 FOLLOW UP DM
 PROOF SM

Instrument #: 2022-0693
 03/15/2022 09:25:51 AM Total Pages: 1
 PLC PLAT COR CERT
 Recording Fee: \$0.00 Transfer Tax: \$0
 Denise Meeves, Recorder, Crawford County Iowa



PREPARED BY: PAUL ASSMAN-CRAWFORD COUNTY ENGINEER'S OFFICE-COURTHOUSE-DENISON, IA.-712-263-2449

UNITED STATES PUBLIC LAND SURVEY CORNER CERTIFICATE OF

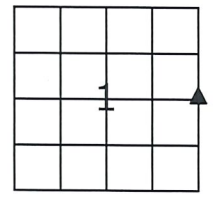
LAND SURVEY MONUMENT SITUATED IN WILLOW TOWNSHIP, EAST 1/4 CORNER OF SECTION 1, T-83N, R-41W
OF THE FIFTH P.M. CRAWFORD COUNTY, IOWA.

PREVIOUSLY RECORDED IN WILLOW TWP. FIELD BOOK PAGE 3, COUNTY ENGINEER'S OFFICE

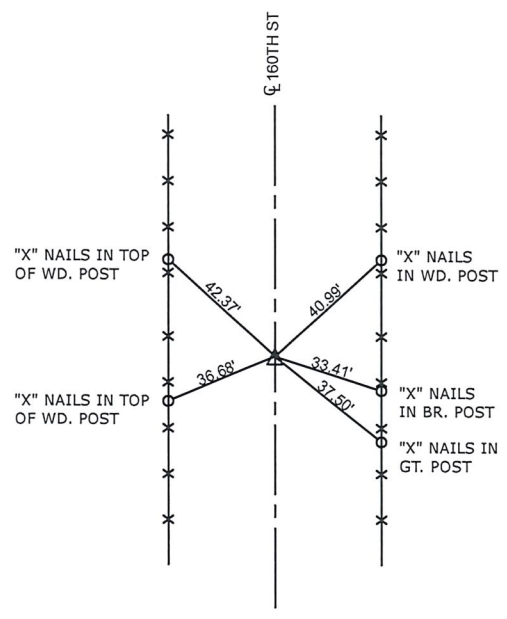
MONUMENT DESCRIPTION AND REMARKS

EAST 1/4 CORNER SEC. 1-83-41

FOUND CONC. MONUMENT AT SURFACE
 COUNTY GRADED ROAD AND SET 5/8" X 18" REBAR WITH
 RED CAP# 11982 1.4' DEEP OVER CONC. MONUMENT AND
 RETIED



EAST 1/4 CORNER SEC. 1-83-41



ALL TIE DISTANCES ARE MEASURED HORIZONTALLY USING GPS

CERTIFICATION:

I HEREBY CERTIFY THAT THIS LAND SURVEYING DOCUMENT WAS PREPARED AND THE RELATED SURVEY WORK WAS PERFORMED BY ME OR UNDER MY DIRECT PERSONAL SUPERVISION AND THAT I AM A DULY LICENSED LAND SURVEYOR UNDER THE LAWS OF THE STATE OF IOWA.

Paul J. Assman
 Signature

3/18/22
 Date of Survey

PAUL J. ASSMAN
 Typed Name

11982
 L.S. No.

12-31-22
 License Renewal Date

Pages covered by this seal 1

