


INDEXED mg mg  
 FOLLOW UP mg  
 PROOFED mg  
 SEARCHED mg

□ □   
 Crawford County Recorder Denise Meeves  
 Fee Book 2007-0532 REC013629  
 02/28/2007 1000AM # Pages 1  
 PLC PLAT CORNER CER  
 Total Fees: \$7.00

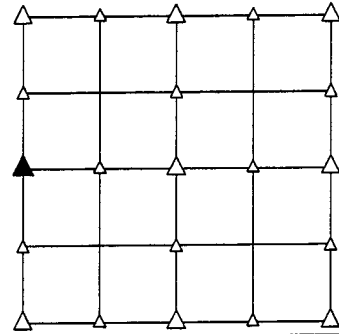
PREPARED BY - TERENCE E. CRAWFORD - SUNDIQUST ENGINEERING - 120 S. MAIN, DENISON, IOWA 51442 - PHONE (712) 263-8118

**UNITED STATES PUBLIC LAND SURVEY CORNER CERTIFICATE  
 OF**

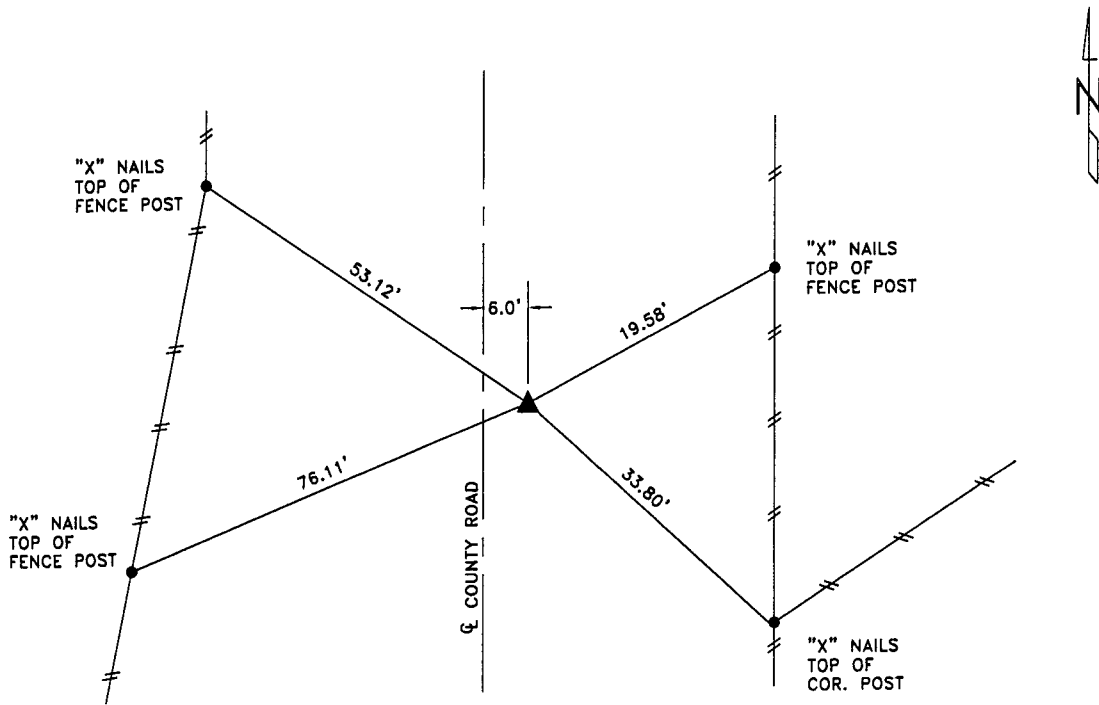
LAND SURVEY MONUMENT SITUATED IN SECTION 24, T 83 N, R 41 W OF  
 THE 5TH P.M., CRAWFORD COUNTY, IOWA.  
 PREVIOUSLY RECORDED IN BOOK \_\_\_\_\_, PAGE \_\_\_\_\_, OTHER \_\_\_\_\_

**MONUMENT DESCRIPTION AND REMARKS**

W1/4 CORNER - FOUND IRON PIN W/YELLOW CAP #8893 0.2' DEEP.



**PLAN VIEW SHOWING RELATIVE LOCATION OF MONUMENT AND REFERENCE POINTS.**



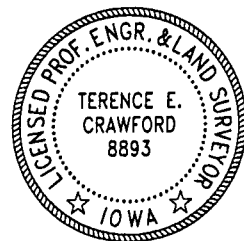
DISTANCES PLUMB CHAINED

W1/4 CORNER SECTION 24-83-41

I HEREBY CERTIFY THAT THIS LAND SURVEYING DOCUMENT WAS PREPARED AND THE RELATED SURVEY WORK WAS PERFORMED BY ME OR UNDER MY DIRECT PERSONAL SUPERVISION AND THAT I AM A DULY LICENSED LAND SURVEYOR UNDER THE LAWS OF THE STATE OF IOWA.

Terence E. Crawford  
 TERENCE E. CRAWFORD  
 IA LICENSE NO. 8893

FEB 09 2007  
 DATE  
 EXP. DATE DECEMBER 31, 2007



SE PROJECT NO. 20407