

INDEXED KM  
 FOLLOW UP \_\_\_\_\_  
 PROOFED \_\_\_\_\_  
 SCANNED \_\_\_\_\_

Instrument #: 2018-1941  
 09/19/2018 08:27:33 AM Total Pages: 1  
 PLC PLAT CORNER CER  
 Recording Fee: \$0.00 Transfer Tax: \$0  
 Denise Meeves, Recorder, Crawford County Iowa



PREPARED BY: PAUL ASSMAN-CRAWFORD COUNTY ENGINEER'S OFFICE-COURTHOUSE-DENISON, IA.-712-263-2449

## UNITED STATES PUBLIC LAND SURVEY CORNER CERTIFICATE OF

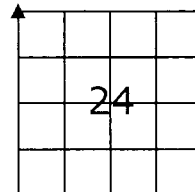
LAND SURVEY MONUMENT SITUATED IN WILLOW TOWNSHIP, THE NORTHWEST CORNER OF SECTION 24, T-83N,  
R-41W OF THE FIFTH P.M. CRAWFORD COUNTY, IOWA.

PREVIOUSLY RECORDED AS NO. 97-0075

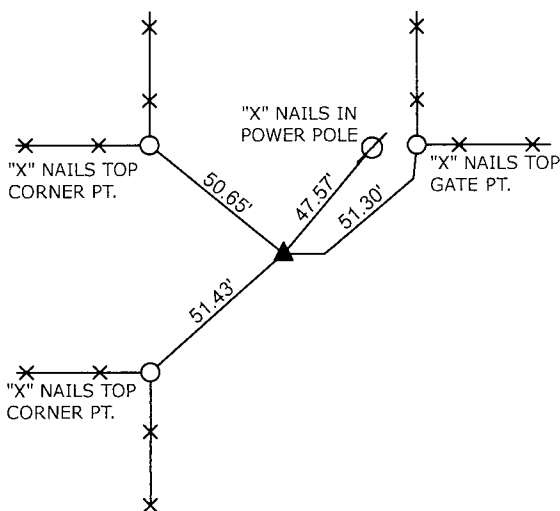
### MONUMENT DESCRIPTION AND REMARKS

NW CORNER SEC. 24-83-41

FOUND 5/8" REBAR WITH CAP NO.8893 6" DEEP IN ACCORDANCE WITH PREVIOUS TIES. COUNTY GRADED RD, PROJECT NO. LG31-24. VERIFIED CORNER AND RETIED.



NW CORNER SEC. 24-83-41



ALL DISTANCES ARE SLOPE CHAINED

**CERTIFICATION:**

I HEREBY CERTIFY THAT THIS LAND SURVEYING DOCUMENT WAS PREPARED AND THE RELATED SURVEY WORK WAS PERFORMED BY ME OR UNDER MY DIRECT PERSONAL SUPERVISION AND THAT I AM A DULY LICENSED LAND SURVEYOR UNDER THE LAWS OF THE STATE OF IOWA.

*Paul J. Assman* 7/31/18  
 Signature Date of Survey

PAUL J. ASSMAN 11982 12-31-18  
 Typed Name L.S. No. License Renewal Date

Pages covered by this seal 1

