

INDEXED km  
 FOLLOW UP \_\_\_\_\_  
 PROOFED \_\_\_\_\_  
 SCANNED \_\_\_\_\_

Instrument #: 2016-0485  
 03/10/2016 11:26:22 AM Total Pages: 1  
 PLC PLAT CORNER CER  
 Recording Fee: \$7.00 Transfer Tax: \$0  
 Denise Reeves, Recorder, Crawford County Iowa



WILKE LAND SURVEYING INC. 401 1800th Street Panama, Iowa 51562 (712)489-2898

**UNITED STATES PUBLIC LAND SURVEY CORNER CERTIFICATE**

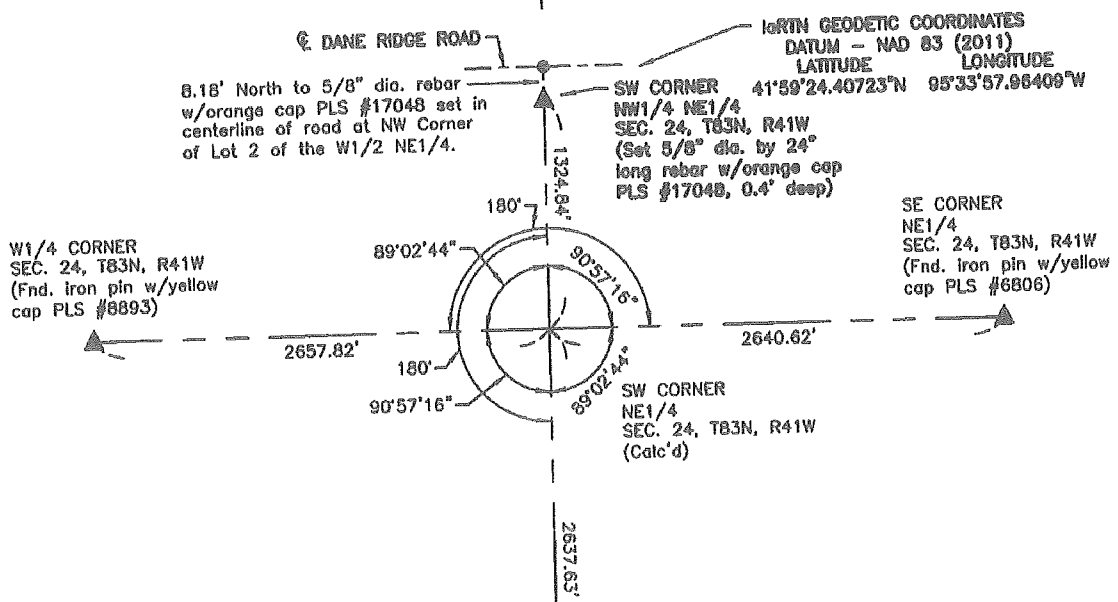
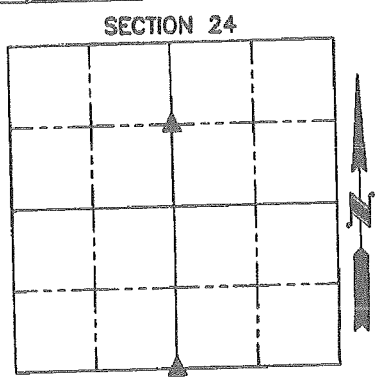
SECTION 24 TOWNSHIP 83N RANGE 41W COUNTY CRAWFORD

Reason for Certificate: Survey in the W1/2 NE1/4

Monument Description and Remarks:

SW CORNER NW1/4 NE1/4 - Set 5/8" diameter by 24" long rebar (0.4' deep) at equal distances from the monument found at the N1/4 Corner & the calculated Center, and in line with the fences North & South of Dane Ridge Road. Monument is 8.18' South of the centerline of Dane Ridge Road.

S1/4 CORNER - Found concrete monument with brass disc (0.6' deep). Placed 5/8" diameter rebar along the South side of the monument for detection purposes only. The monument is +/- 3.4' South of the fence West. The corner post is rotted off North of the monument, and the fence South is on the ground. Drove new steel fence post on the North side of the monument as a marker.



1983N GEODETIC COORDINATES  
 DATUM - NAD 83 (2011)  
 LATITUDE LONGITUDE

41°59'24.40723"N 95°33'57.96409"W

41°58'46.28423"N 95°33'57.78577"W

(ALL DISTANCES ARE HORIZONTAL)



I hereby certify that this land surveying document was prepared and the related survey work was performed by me or under my direct personal supervision and that I am a duly licensed Land Surveyor under the laws of the State of Iowa.

Dean A. Wilke 3/07/16  
 Dean A. Wilke Date

License number 17048  
 My license renewal date is December 31, 2017  
 Pages or sheets covered by this seal: This page only

List Corners to be Indexed			
Corner	Section	Twp.	Range
SW CORNER NW1/4 NE1/4	24	83N	41W
S1/4 CORNER	24	83N	41W