

Instrument #: 2015-0133
 01/26/2015 12:43:58 PM Total Pages: 1
 PLC PLAT CORNER CER
 Recording Fee: \$7.00 Transfer Tax: \$0
 Denise Reeves, Recorder, Crawford County Iowa



WILKE LAND SURVEYING INC. 401 1800th Street Panama, Iowa 51562 (712)489-2898

UNITED STATES PUBLIC LAND SURVEY CORNER CERTIFICATE

SECTION 25 TOWNSHIP 83N RANGE 41W COUNTY CRAWFORD

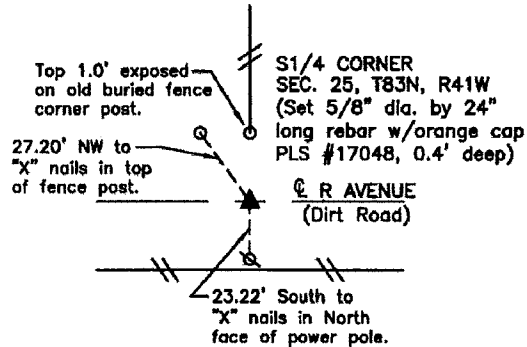
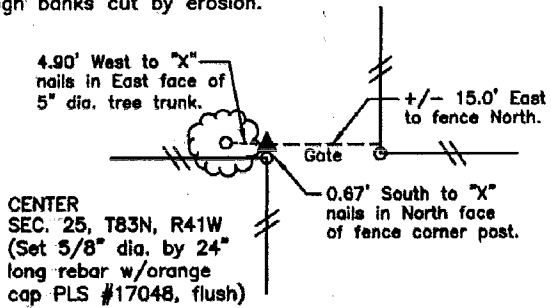
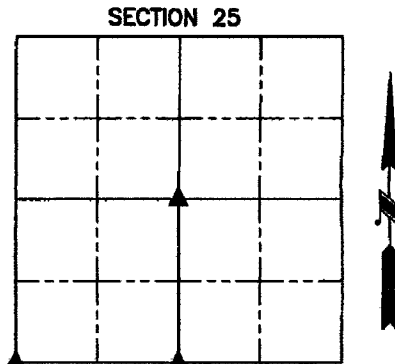
Monument Description and Remarks:

Reason for Certificate: Survey in SW1/4

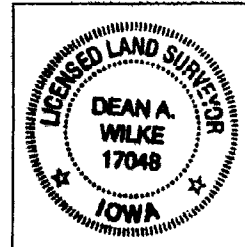
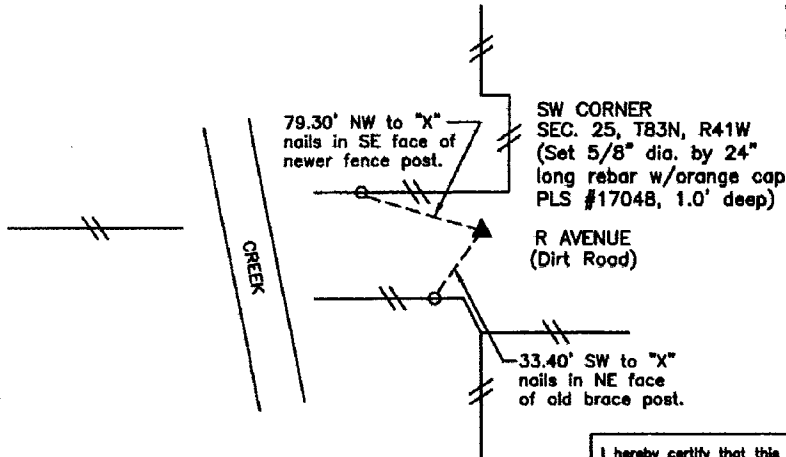
CENTER - Set 5/8" diameter by 24" long rebar with orange cap (flush) along the North side of a fence corner post with fences West, South, and East. Fence North is 15.0' East on the East side of gate in East/West fence.

S1/4 CORNER - Set 5/8" diameter by 24" long rebar with orange cap (0.4' deep) at a split of road right-of-way fences and in line with fence North as noted in WPA notes.

SW CORNER - Set 5/8" diameter by 24" long rebar with orange cap (1.0' deep) in line with the fence South as noted in WPA notes, and in line with the fence on West side of creek projected East. The dirt road is not straight and has high banks cut by erosion.



ALL DISTANCES ARE HORIZONTAL



I hereby certify that this land surveying document was prepared and the related survey work was performed by me or under my direct personal supervision and that I am a duly licensed Land Surveyor under the laws of the State of Iowa.

Dean A. Wilke 1/22/15
 Dean A. Wilke Date

License number 17048
 My license renewal date is December 31, 2015
 Pages or sheets covered by this seal: This page only

List Corners to be Indexed			
Corner	Section	Twp.	Range
CENTER	25	83N	41W
S1/4 CORNER	25	83N	41W
SW CORNER	25	83N	41W