

# UNITED STATES PUBLIC LAND SURVEY CORNER CERTIFICATE

OF

Land Survey Monuments situated in Section 30, Township 83, Range 40, of the Fifth Principal Meridian, Crawford County, Iowa. Previously recorded in \_\_\_\_\_ in County Recorder's Office.

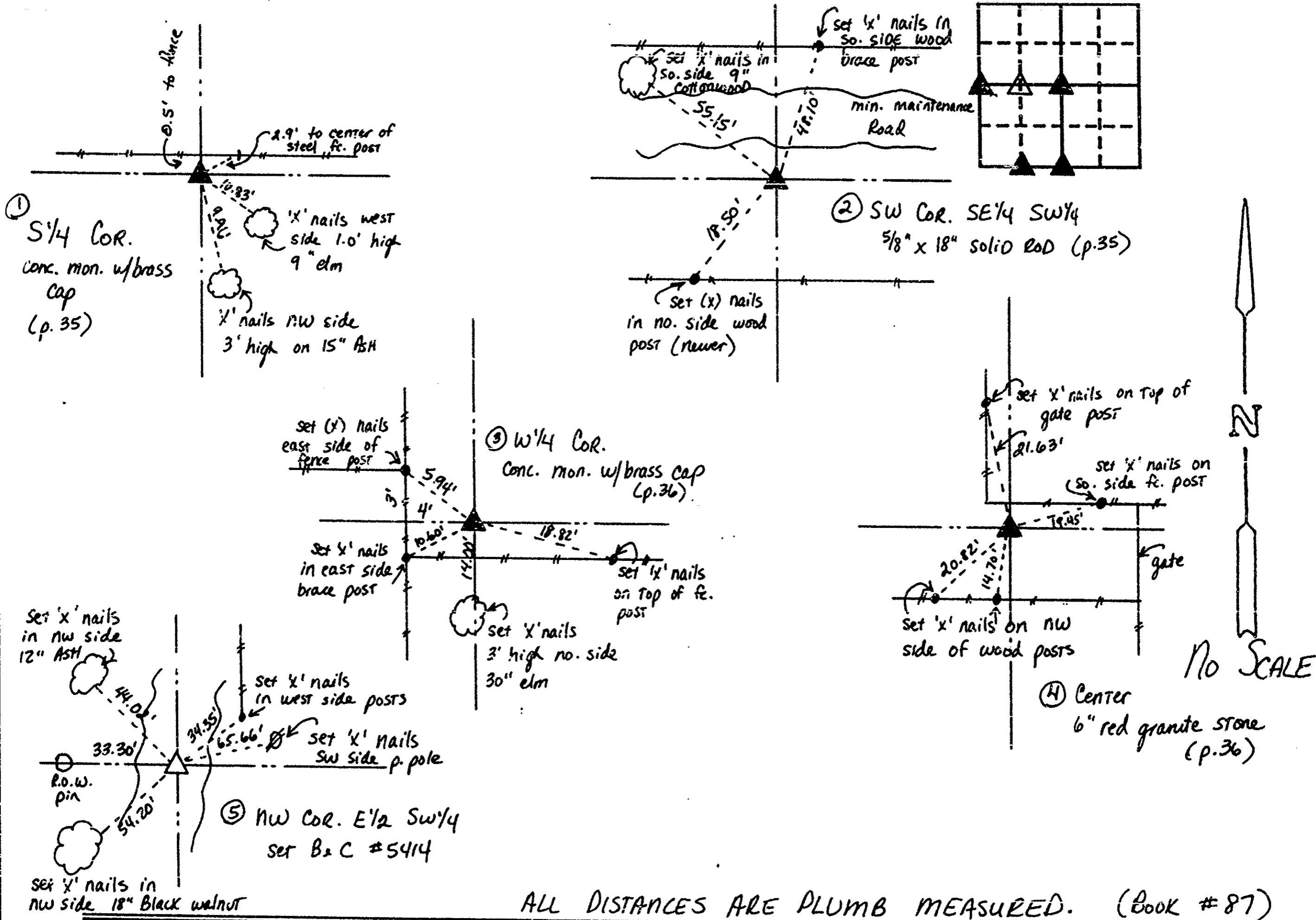
(book, page, document number, etc.)

(Show reason for preparing this certificate, the evidence and detailed procedures used in establishing the corner positions and monumentation found or placed.)

Monument Description and Remarks: ① S<sup>1</sup>/<sub>4</sub> COR. = found brass cap concrete monument top flush w/ground w/iron T-post 2' tall on north side of monument. ② SW COR. SE<sup>1</sup>/<sub>4</sub> SW<sup>1</sup>/<sub>4</sub> = found 5/8" x 18" solid rod top 12" deep w/3 large stones at base of rod 18" deep, 0.5' to 1.0' north of old fence and 6' south of vertical bank on so. side of dirt road. ③ W<sup>1</sup>/<sub>4</sub> COR. = found brass cap conc. mon. 12" deep 0.5'-1.0' north of old wire fence 4'± east of fc. cor. post. ④ Center = fd. 12" (N-S) x 6" (E-W) red granite stone 12" deep on east side of wd. fc. cor. post. set 5/8" rebar on so. side of stone 0.5' south. ⑤ NW Cor. E<sup>1</sup>/<sub>2</sub> SW<sup>1</sup>/<sub>4</sub> = set 5/8" x 18" rebar w/cap #5414 6" deep in gravel road.

## PLAN - VIEW

(Show a minimum of three reference ties to durable physical objects, relevant monuments and physical conditions that will enable recovery of the corner.)

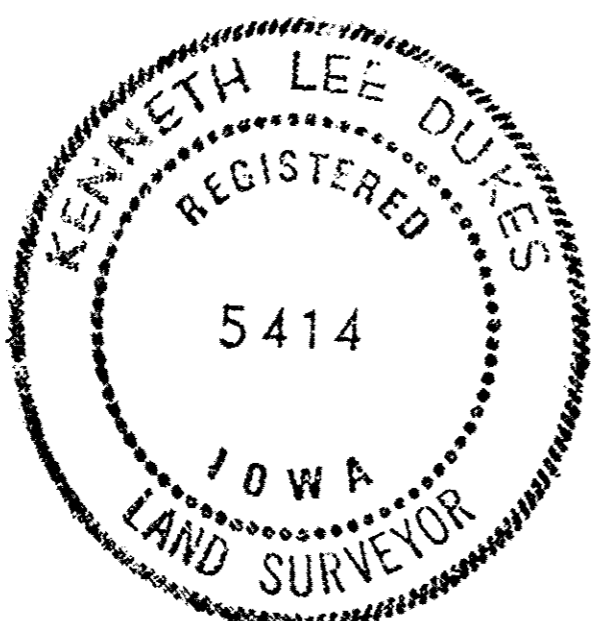


ALL DISTANCES ARE PLUMB MEASURED. (Book # 87)

I hereby certify that the survey work was completed and this certificate was prepared by me or under my direct personal supervision and that I am a duly registered land surveyor under the laws of the state of Iowa.

Signature: Kenneth Lee Duker  
Name typed or printed: KENNETH LEE DUKES

Date: August 4, 1992 Reg. No. Iowa 5414



Corners	Section	Twp	Range
S <sup>1</sup> / <sub>4</sub>	30	83	40
SW cor. SE <sup>1</sup> / <sub>4</sub> SW <sup>1</sup> / <sub>4</sub>	30	83	40
W <sup>1</sup> / <sub>4</sub>	30	83	40
Center	30	83	40
NW Cor. E <sup>1</sup> / <sub>2</sub> SW <sup>1</sup> / <sub>4</sub>	30	83	40

FILED DENISON, IOWA  
CRAWFORD COUNTY

92 AUG 11 AM 10:42

INST. NO. 92-2055  
DENISE JURGENSEN, RECORDER  
*Denise Jurgensen*  
FEE \$ 5.00

INDEXED AB

FOLLOW UP \_\_\_\_\_

PROOFED \_\_\_\_\_