

Instrument #: 2016-0485
 03/10/2016 11:26:22 AM Total Pages: 1
 PLC PLAT CORNER CER
 Recording Fee: \$7.00 Transfer Tax: \$0
 Denise Reeves, Recorder, Crawford County Iowa



WILKE LAND SURVEYING INC. 401 1800th Street Panama, Iowa 51562 (712)489-2898

UNITED STATES PUBLIC LAND SURVEY CORNER CERTIFICATE

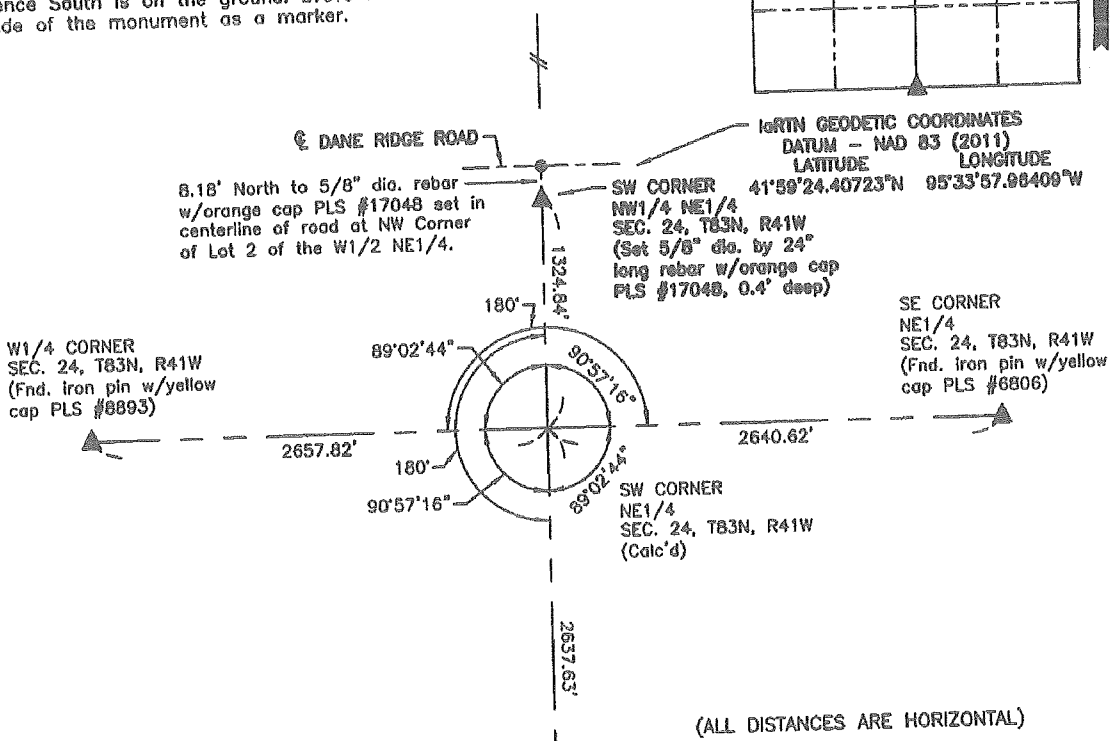
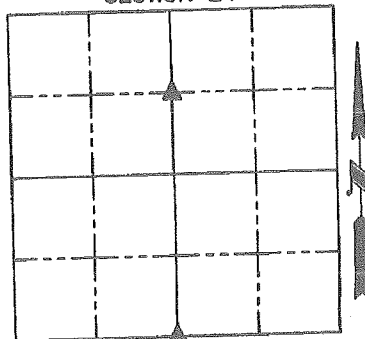
SECTION 24 TOWNSHIP 83N RANGE 41W COUNTY CRAWFORD
 Reason for Certificate: Survey in the W1/2 NE1/4

Monument Description and Remarks:

SW CORNER NW1/4 NE1/4 - Set 5/8" diameter by 24" long rebar (0.4' deep) at equal distances from the monument found at the N1/4 Corner & the calculated Center, and in line with the fences North & South of Dane Ridge Road. Monument is 8.18' South of the centerline of Dane Ridge Road.

S1/4 CORNER - Found concrete monument with brass disc (0.6' deep). Placed 5/8" diameter rebar along the South side of the monument for detection purposes only. The monument is +/- 3.4' South of the fence West. The corner post is rotted off North of the monument, and the fence South is on the ground. Drove new steel fence post on the North side of the monument as a marker.

SECTION 24



I hereby certify that this land surveying document was prepared and the related survey work was performed by me or under my direct personal supervision and that I am a duly licensed Land Surveyor under the laws of the State of Iowa.

Dean A. Wilke 3/07/16
 Dean A. Wilke Date

License number 17048
 My license renewal date is December 31, 2017
 Pages or sheets covered by this seal: This page only

List Corners to be Indexed			
Corner	Section	Twp.	Range
SW CORNER NW1/4 NE1/4	24	83N	41W
S1/4 CORNER	24	83N	41W