

2000 AU -8 PM 2: 24

INST. NO. 200-2061
DENISE MEEVES, RECORDER
Denise Meeves
FEE \$ 6.00

INDEXED
FOLLOW UP
PLACED
MM

WARDER C. HILLHOUSE, JR. MHF ENGINEERING P.C. 300 W. MCKINLEY JEFFERSON, IA. (515)386-4101

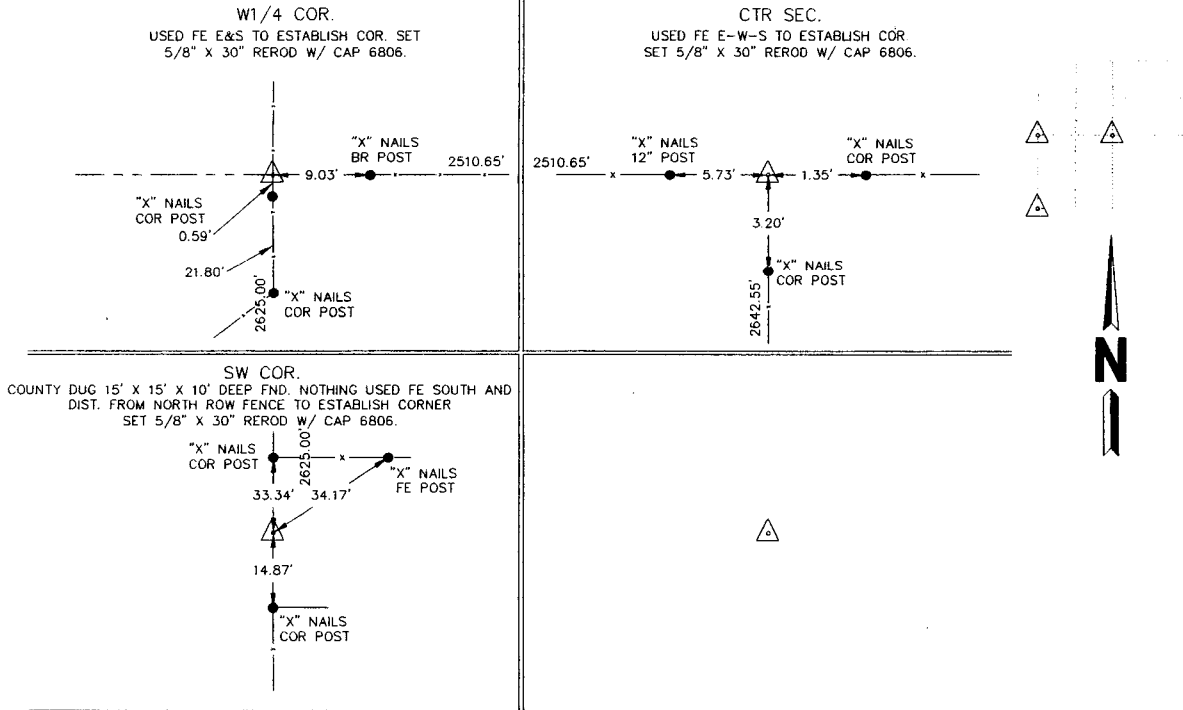
UNITED STATES PUBLIC LAND SURVEY CORNER CERTIFICATE OF
Land Survey Monuments in Section 19, Township 83, Range 40,
of the Fifth Principal Meridian, CRAWFORD County, Iowa.
Previously recorded in _____ in County Recorder's Office.
(book, page, document number, etc.)

(Show reason for preparing this certificate, the evidence and detailed procedures used in establishing the corner positions and monumentation found or placed.)

Monument Description and Remarks: _____

PLAN - VIEW

(Show a minimum of three reference ties to durable physical objects, relevant monuments and physical conditions that will enable recovery of the corner.)



I hereby certify that land surveying document and the related survey work was performed by me or under my direct personal supervision and that I am a duly licensed land surveyor under the laws of the state of Iowa.

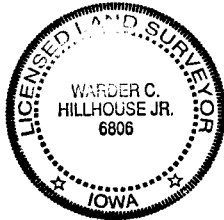
Signature: *Warder C. Hillhouse, Jr.*
Name typed or printed: Warder C. Hillhouse, Jr.

Date: 8/3/00 Lic. No. 6806

License Renewal Dec. 31, 2001

Date Surveyed: 8/00

Seal



List Corners to be Indexed

Corners	Section	Twp	Range
SW COR	19	83	40
W1/4 COR	19	83	40
CTR. SEC.	19	83	40

File No. 00129-1



M.H.F. ENGINEERING, P.C.
ENGINEERS - LAND SURVEYORS
Jefferson, Iowa 50129 Ph. (515)386-4101