

22 11-10-39 - Bug 38" x 5' x 18'

hole 15' 1/2" E of Ex W. fence

No find
Bug 10' 1/2" x 16' hole on
W. cross fence. No find.

10' cut Estab

22 Found rotted remains

27 of old hardwood stave

12" / 1079 - 4' deep. Lower end

set C.M.

Ties:

38.4 S. from cor post

42.2 S.E. " 1st steel post W.

38.4 N. " " cor post

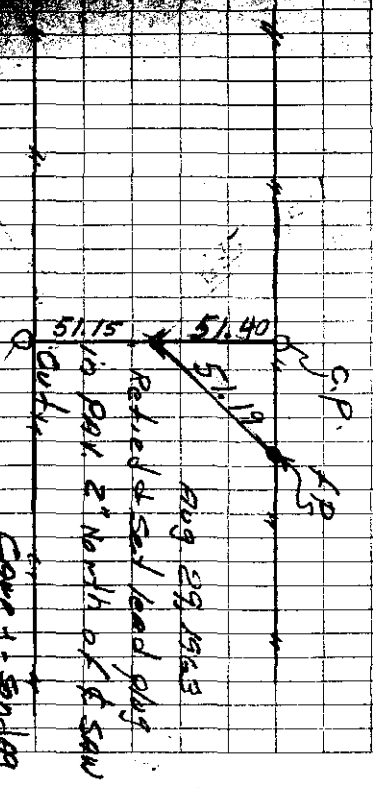
34.3 N.E. " " 1st steel post W.

18-9-89

5-2-4
Mentel - 11/1/89

92-24-F

Found 3-22-90



Set bolt in pav. 8/9/89

June 13, 1989
Retired Coyote, Kansas