

INDEXED ag 7/8  
 RECORDED 8/18  
 FILED 1/8  
 COUNTY g

Crawford County Recorder  
 Denise Meeves  
**Fee Book 2008-3345**  
 12/16/2008 @02:35PM  
 PLC PLAT CORNER CER  
 Book: Page: # Pages: 1  
 Total Fees: \$0.00

PREPARED BY: MICKAEL F. BERNDT - CRAWFORD COUNTY ENGINEER'S OFFICE - COURTHOUSE - DENISON, IA. - 712-263-2449

**UNITED STATES PUBLIC LAND SURVEY CORNER CERTIFICATE  
 OF  
 LAND SURVEY MONUMENT SITUATED IN WILLOW TOWNSHIP, THE NORTH 1/4 CORNER  
 OF SECTION 27, T-83N, R-41W OF THE FIFTH P.M. CRAWFORD COUNTY, IOWA.**

PREVIOUSLY RECORDED AS NO.

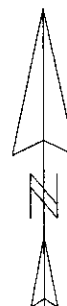
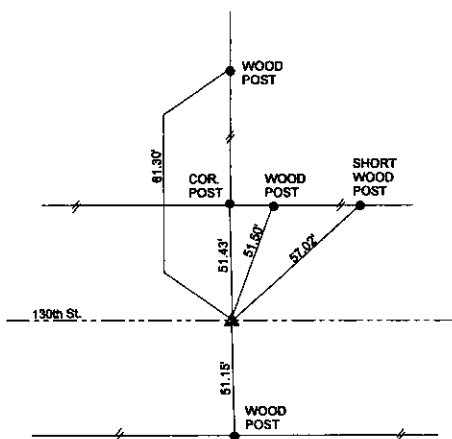
**MONUMENT DESCRIPTION AND REMARKS**

NORTH 1/4 CORNER SEC. 27-83-41

DATE SET: 10-21-08

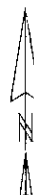
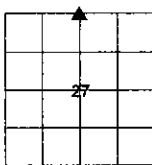
FOUND CARRIAGE BOLT TO SURFACE. THE BOLT WAS TIED OFF AND A 3" HMA OVERLAY WAS PLACED OVER EXISTING ASPHALT. USING PREVIOUS TIES A 1/2" DIA. X 4" CARRIAGE BOLT WAS SET BACK TO THE SURFACE.

NORTH 1/4 CORNER SEC. 27-83-41



ALL DISTANCES ARE SLOPED CHAINED  
 ALL TIES ARE "X" NAILS UNLESS NOTED.

CORNER: NORTH 1/4  
 SECTION: 27  
 TOWNSHIP: 83N  
 RANGE: 41W

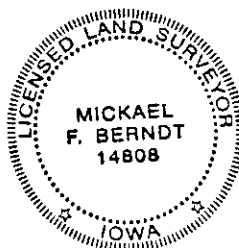


**CERTIFICATION:**

I HEREBY CERTIFY THAT THIS LAND SURVEYING DOCUMENT WAS PREPARED AND THE RELATED SURVEY WORK WAS PERFORMED BY ME OR UNDER MY DIRECT PERSONAL SUPERVISION AND THAT I AM A DULY LICENSED LAND SURVEYOR UNDER THE LAWS OF THE STATE OF IOWA.

Mickael F. Berndt  
 Signature

10-21-08  
 Date of Survey



MICKAEL F. BERNDT  
 Typed Name

14808  
 L.S. No.

Dec. 31, 2010  
 License Renewal Date

Pages covered by this seal 1