

INDEXED     
 FOLLOW UP     
 PROOFED     
 SCANNED   

Instrument #: 2014-1013  
 05/22/2014 11:19:03 AM Total Pages: 1  
 PLC PLAT CORNER CER  
 Recording Fee: \$7.00 Transfer Tax: \$0  
 Denise Meeves, Recorder, Crawford County Iowa



WARDER C. HILLHOUSE, JR. MHF ENGINEERING P.C. 300 W. MCKINLEY JEFFERSON, IA. (515)386-4101  
**UNITED STATES PUBLIC LAND SURVEY CORNER CERTIFICATE OF**

Land Survey Monuments in Section 22, Township 83, Range 41, of the Fifth Principal Meridian, CRAWFORD County, Iowa.  
 Previously recorded in \_\_\_\_\_ in County Recorder's Office.  
 (book, page, document number, etc.)

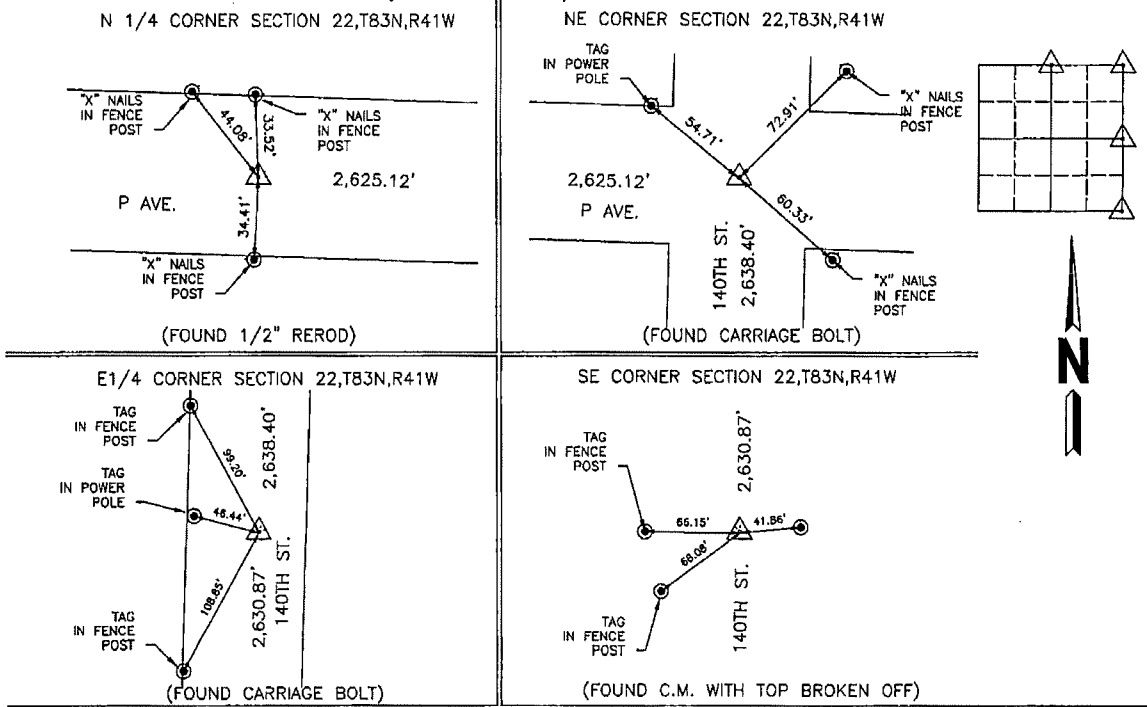
(Show reason for preparing this certificate, the evidence and detailed procedures used in establishing the corner positions and monumentation found or placed.)

Monument Description and Remarks:

CORNER LOCATED FOR SURVEY WORK WITHIN SECTION.

**PLAN - VIEW**

(Show a minimum of three reference ties to durable physical objects, relevant monuments and physical conditions that will enable recovery of the corner.)

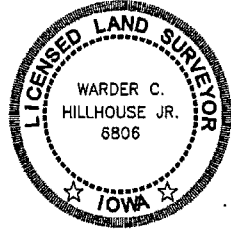


I hereby certify that this land surveying document and the related survey work was performed by me or under my direct personal supervision and that I am a duly licensed land surveyor under the laws of the state of Iowa.

Signature: Warder C. Hillhouse, Jr.  
 Warder C. Hillhouse, Jr.

Date: 5/16/14 Lic. No. 6806

License Renewal Dec. 31, 2015  
 Date Surveyed: 5/14



Seal

List Corners to be Indexed

Corners	Section	Twp	Range
N1/4 COR.	22	83	41
NE CORNER	22	83	41
E1/4 COR.	22	83	41
SE CORNER	22	83	41

File No. 14020-1