

96 AUG -5 AM 10:00

INST. NO. 96-2228
DENISE HEEVES, RECORDER
Denise Heeves
FEE \$ 6.00

This document prepared by: Semke & Associates - 712-792-2276
Michael G. Semke, L.S.#10318 - 608 N. Court St., Carroll, Iowa

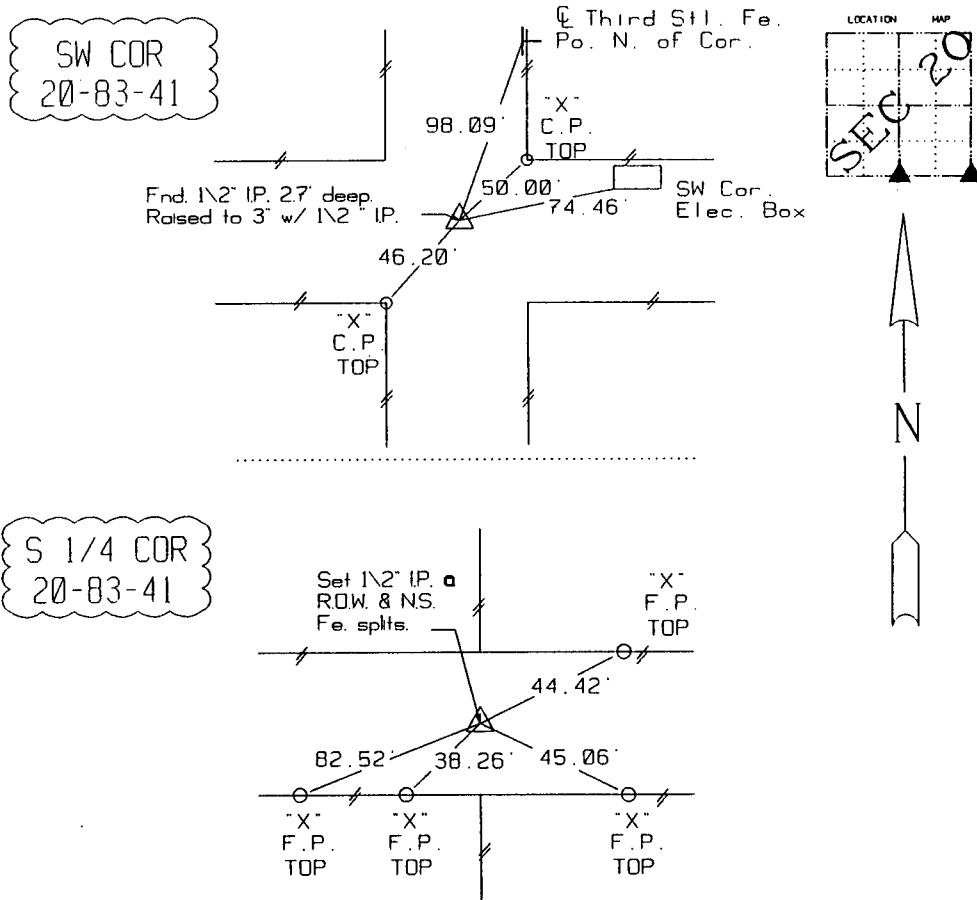
UNITED STATES PUBLIC LAND SURVEY CORNER CERTIFICATE
OF

Land Survey Monuments situated in Section 20, Township 83, Range 41, of the Fifth Principal Meridian, Crawford County, Iowa. Previously recorded in _____ in County Recorder's Office. (book, page, document number, etc.)

(Show reason for preparing this certificate, the evidence and detailed procedures used in establishing the corner positions and monumentation found or placed.)

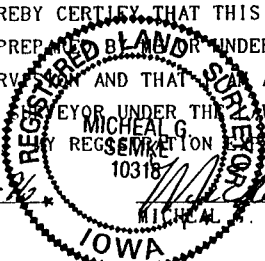
PLAN - VIEW

(Show a minimum of three reference ties to durable physical objects, relevant monuments and physical conditions that will enable recovery of the corner.)



Note: All ties slope chained unless noted.

I HEREBY CERTIFY THAT THIS CORNER CERTIFICATE WAS PREPARED BY AND UNDER MY DIRECT PERSONAL SUPERVISION AND THAT MICHAEL G. SEMKE IS A DULY REGISTERED LAND SURVEYOR UNDER THE LAWS OF THE STATE OF IOWA. MY REGISTRATION EXPIRES 12-31-97.
DATE 8-7-96 MICHAEL G. SEMKE, RLS NO 10318



List Corners to be Indexed			
Corners	Section	Twp	Range
S 1/4	20	83	41
N 1/4	29	83	41
SE COR	20	83	41
SW COR	21	83	41
NE COR	29	83	41
NW COR	28	83	41