

INDEX
 SCAN
 FOLLOW UP
 PROOF

Instrument #: 2026-0954
 05/13/2026 10:53:41 AM Total Pages: 1
 PLC PLAT COR CERT
 Recording Fee: \$7.00 Transfer Tax: \$0
 Sara Neseck, Recorder, Crawford County Iowa



WILKE LAND SURVEYING INC. 401 1800th Street Panama, Iowa 51562 (712)579-0551

UNITED STATES PUBLIC LAND SURVEY CORNER CERTIFICATE

SECTION 2 TOWNSHIP 83N RANGE 41W COUNTY Crawford

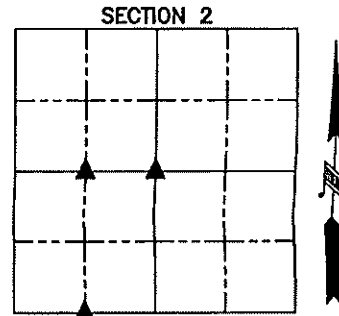
Monument Description and Remarks:

Reason for Certificate: Survey in the SW1/4

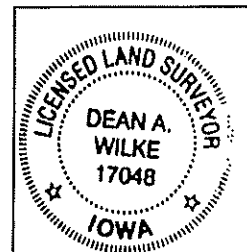
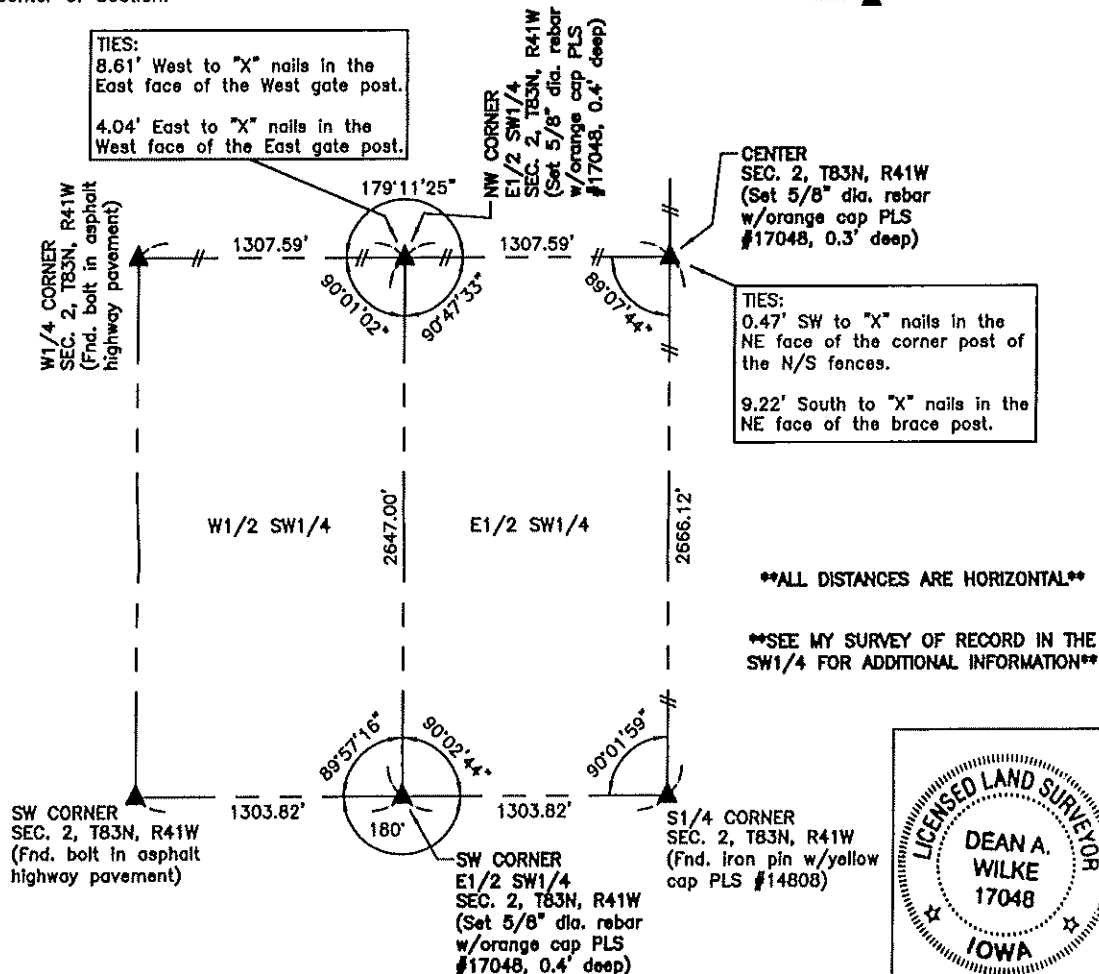
CENTER - Set a 5/8" diameter by 24" long rebar with an orange cap PLS #17048 (0.3' deep) on the Northeast side of the corner post with fences North, South, & West. The set monument is 13.41' West of a straight line from the N1/4 Corner to the S1/4 Corner and 25.40' North of a straight line from the W1/4 Corner to the E1/4 Corner.

SW CORNER E1/2 SW1/4 - Set a 5/8" diameter by 24" long rebar with an orange cap PLS #17048 (0.4' deep) at the midpoint of the South line of the Southwest Quarter.

NW CORNER E1/2 SW1/4 - Set a 5/8" diameter by 24" long rebar with an orange cap PLS #17048 (0.4' deep) in the existing East/West fence and at equal distances from the W1/4 Corner & the Center of Section. The set monument is 9.24' South of a straight line from the W1/4 Corner to the Center of Section.



TIES:
 8.61' West to "X" nails in the East face of the West gate post.
 4.04' East to "X" nails in the West face of the East gate post.



List Corners to be Indexed			
Corner	Section	Twp.	Range
CENTER	2	83N	41W
SW CORNER E1/2 SW1/4	2	83N	41W
NW CORNER E1/2 SW1/4	2	83N	41W

I hereby certify that this land surveying document was prepared and the related survey work was performed by me or under my direct personal supervision and that I am a duly licensed Land Surveyor under the laws of the State of Iowa.

Dean A. Wilke 5/11/26
 Dean A. Wilke Date

License number 17048
 My license renewal date is December 31, 2027
 Pages or sheets covered by this seal: This page only