


INDEXED \_\_\_\_\_  
 FOLLOW UP \_\_\_\_\_  
 PROOFED \_\_\_\_\_  
 SCANNED \_\_\_\_\_

□ □   
 Crawford County Recorder Denise Meeves  
 Fee Book 2006-3555 REC012938  
 12/22/2006 8:027AM # Pages 1  
 PLC PLAT CORNER CER  
 Total Fees: \$7.00

WARDER C. HILLHOUSE, JR. MHF ENGINEERING P.C. 300 W. MCKINLEY JEFFERSON, IA. (515)386-4101  
**UNITED STATES PUBLIC LAND SURVEY CORNER CERTIFICATE OF**

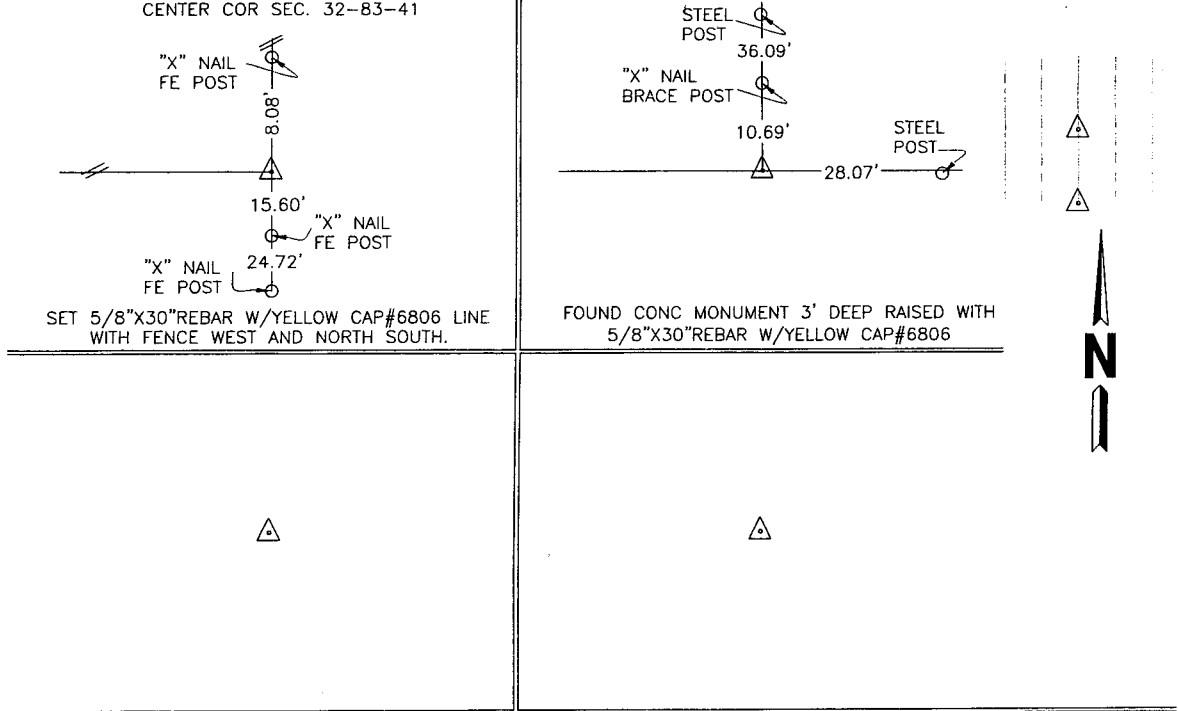
Land Survey Monuments in Section 32, Township 83, Range 41, of the Fifth Principal Meridian, CRAWFORD County, Iowa.  
 Previously recorded in \_\_\_\_\_ in County Recorder's Office.  
 (book, page, document number, etc.)

(Show reason for preparing this certificate, the evidence and detailed procedures used in establishing the corner positions and monumentation found or placed.)

Monument Description and Remarks: CORNERS WERE LOCATED FOR SURVEY WORK IN SECTION.

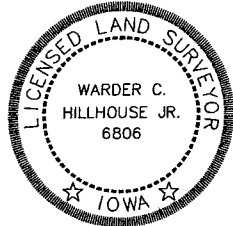
**PLAN - VIEW**

(Show a minimum of three reference ties to durable physical objects, relevant monuments and physical conditions that will enable recovery of the corner.) S1/4 COR SEC. 32-83-41




I hereby certify that this land surveying document and the related survey work was performed by me or under my direct personal supervision and that I am a duly licensed land surveyor under the laws of the state of Iowa.  
 Signature: Warder C. Hillhouse, Jr.  
 Warder C. Hillhouse, Jr.  
 Date: 12/19/06 Lic. No. 6806  
 License Renewal Dec. 31, 2007  
 Date Surveyed: 12/14/06

Seal



List Corners to be Indexed

Corners	Section	Twp	Range
CENTER	32	83	41
S1/4	32	83	41

File No. 06226-1  
 M.H.F. ENGINEERING, P.C.  
 ENGINEERS - LAND SURVEYORS  
 Jefferson, Iowa 50129 Ph. (515)386-4101