



INDEXED _____
 FOLLOW UP 1 _____
 PROCESSED _____
 \$25.00 _____

WARDER C. HILLHOUSE, JR. M.H.F. ENGINEERING P.C. 300 W. MCKINLEY JEFFERSON, IA. (515)386-4101
UNITED STATES PUBLIC LAND SURVEY CORNER CERTIFICATE OF

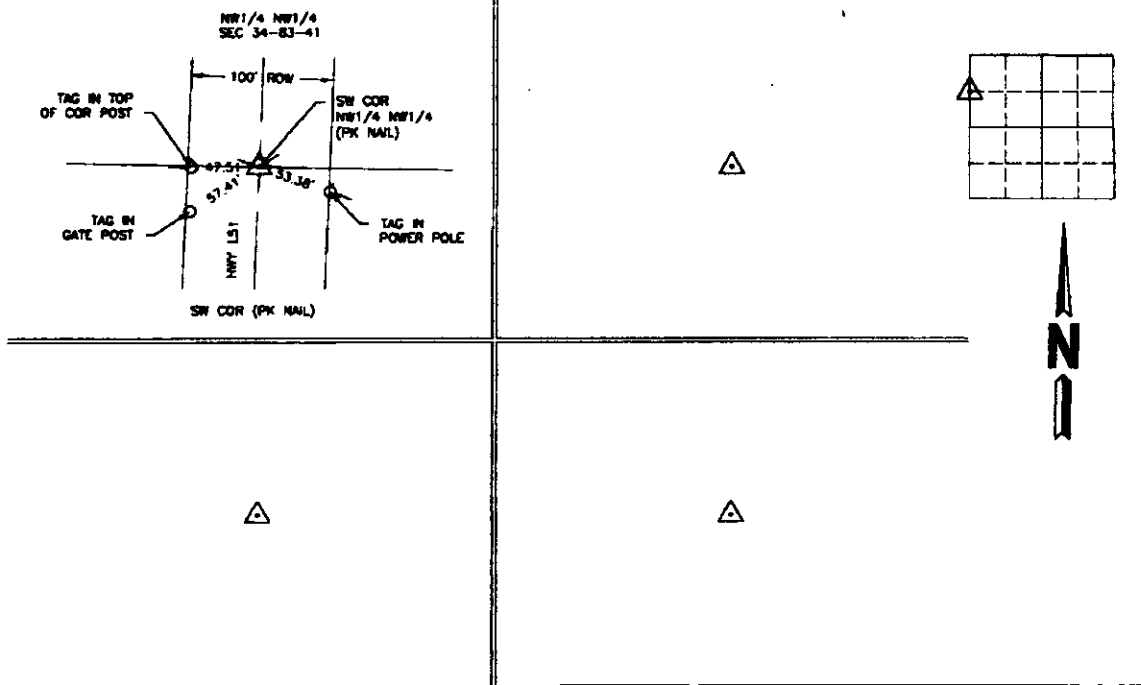
Land Survey Monuments in Section 34 Township 83 Range 41, of the Fifth Principal Meridian, CRAWFORD County, Iowa.
 Previously recorded in _____ in County Recorder's Office.
(book, page, document number, etc.)

(Show reason for preparing this certificate, the evidence and detailed procedures used in establishing the corner positions and monumentation found or placed.)

Monument Description and Remarks:

PLAN - VIEW

(Show a minimum of three reference ties to durable physical objects, relevant monuments and physical conditions that will enable recovery of the corner.)

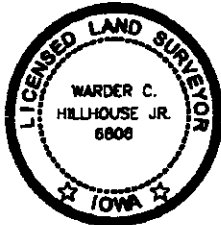


I hereby certify that this land surveying document and the related survey work was performed by me or under my direct personal supervision and that I am a duly licensed land surveyor under the laws of the state of Iowa.

Signature: Warder C. Hillhouse, Jr.
 Warder C. Hillhouse, Jr.

Date: 01/07/14 Lic. No. 6806

License Renewal Dec. 31, 2015
 Date Surveyed: 12/2013



Seal

List Corners to be Indexed

Corners	Section	Twp	Range
W1/4 CORNER	34	83	41
NW1/4 NW1/4			

File No. 13149



M.H.F. ENGINEERING, P.C.
 ENGINEERS - LAND SURVEYORS
 Jefferson, Iowa 50129 Ph. (515)386-4101