

INDEXED \_\_\_\_\_  
 FOLLOW UP \_\_\_\_\_  
 PROCEED \_\_\_\_\_  
 COMPLETE \_\_\_\_\_

Instrument #: 2015-0133  
 01/26/2015 12:43:58 PM Total Pages: 1  
 PLC PLAT CORNER CER  
 Recording Fee: \$7.00 Transfer Tax: \$0  
 Denise Meeves, Recorder, Crawford County Iowa



WILKE LAND SURVEYING INC. 401 1800th Street Panama, Iowa 51562 (712)489-2898

UNITED STATES PUBLIC LAND SURVEY CORNER CERTIFICATE

SECTION 25 TOWNSHIP 83N RANGE 41W COUNTY CRAWFORD

Monument Description and Remarks:

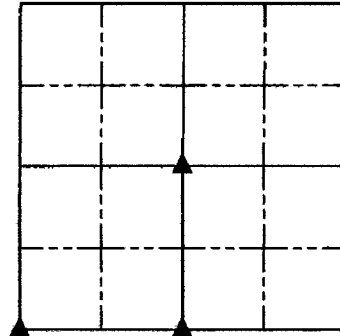
Reason for Certificate: Survey in SW1/4

**CENTER** - Set 5/8" diameter by 24" long rebar with orange cap (flush) along the North side of a fence corner post with fences West, South, and East. Fence North is 15.0' East on the East side of gate in East/West fence.

**S1/4 CORNER** - Set 5/8" diameter by 24" long rebar with orange cap (0.4' deep) at a split of road right-of-way fences and in line with fence North as noted in WPA notes.

**SW CORNER** - Set 5/8" diameter by 24" long rebar with orange cap (1.0' deep) in line with the fence South as noted in WPA notes, and in line with the fence on West side of creek projected East. The dirt road is not straight and has high banks cut by erosion.

SECTION 25



**CENTER**  
 SEC. 25, T83N, R41W  
 (Set 5/8" dia. by 24"  
 long rebar w/orange  
 cap PLS #17048, flush)

0.67' South to "X"  
 nails in North face  
 of fence corner post.

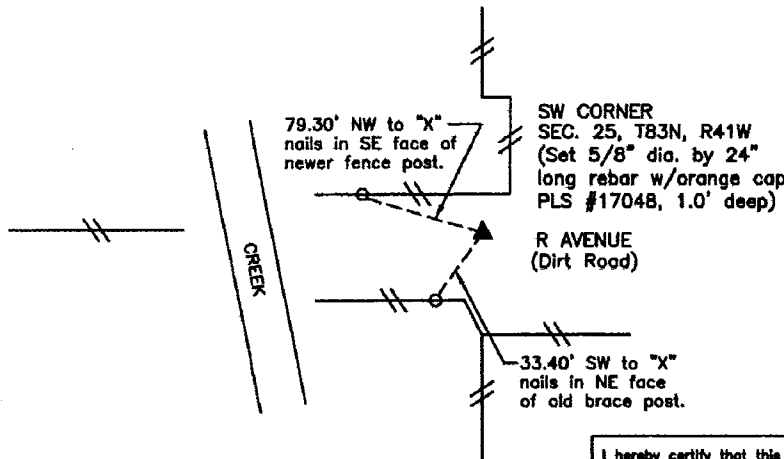
Top 1.0' exposed  
 on old buried fence  
 corner post.  
**S1/4 CORNER**  
 SEC. 25, T83N, R41W  
 (Set 5/8" dia. by 24"  
 long rebar w/orange cap  
 PLS #17048, 0.4' deep)

27.20' NW to  
 "X" nails in top  
 of fence post.

**Q R AVENUE**  
 (Dirt Road)

23.22' South to  
 "X" nails in North  
 face of power pole.

\*\*ALL DISTANCES ARE HORIZONTAL\*\*



**SW CORNER**  
 SEC. 25, T83N, R41W  
 (Set 5/8" dia. by 24"  
 long rebar w/orange cap  
 PLS #17048, 1.0' deep)

**R AVENUE**  
 (Dirt Road)

33.40' SW to "X"  
 nails in NE face  
 of old brace post.



I hereby certify that this land surveying document was prepared and the related survey work was performed by me or under my direct personal supervision and that I am a duly licensed Land Surveyor under the laws of the State of Iowa.

*Dean A. Wilke* 1/22/15  
 Dean A. Wilke Date

License number 17048

My license renewal date is December 31, 2015

Pages or sheets covered by this seal: This page only

List Corners to be Indexed

Corner	Section	Twp.	Range
CENTER	25	83N	41W
S1/4 CORNER	25	83N	41W
SW CORNER	25	83N	41W