

UNITED STATES PUBLIC LAND SURVEY CORNER CERTIFICATE

OF

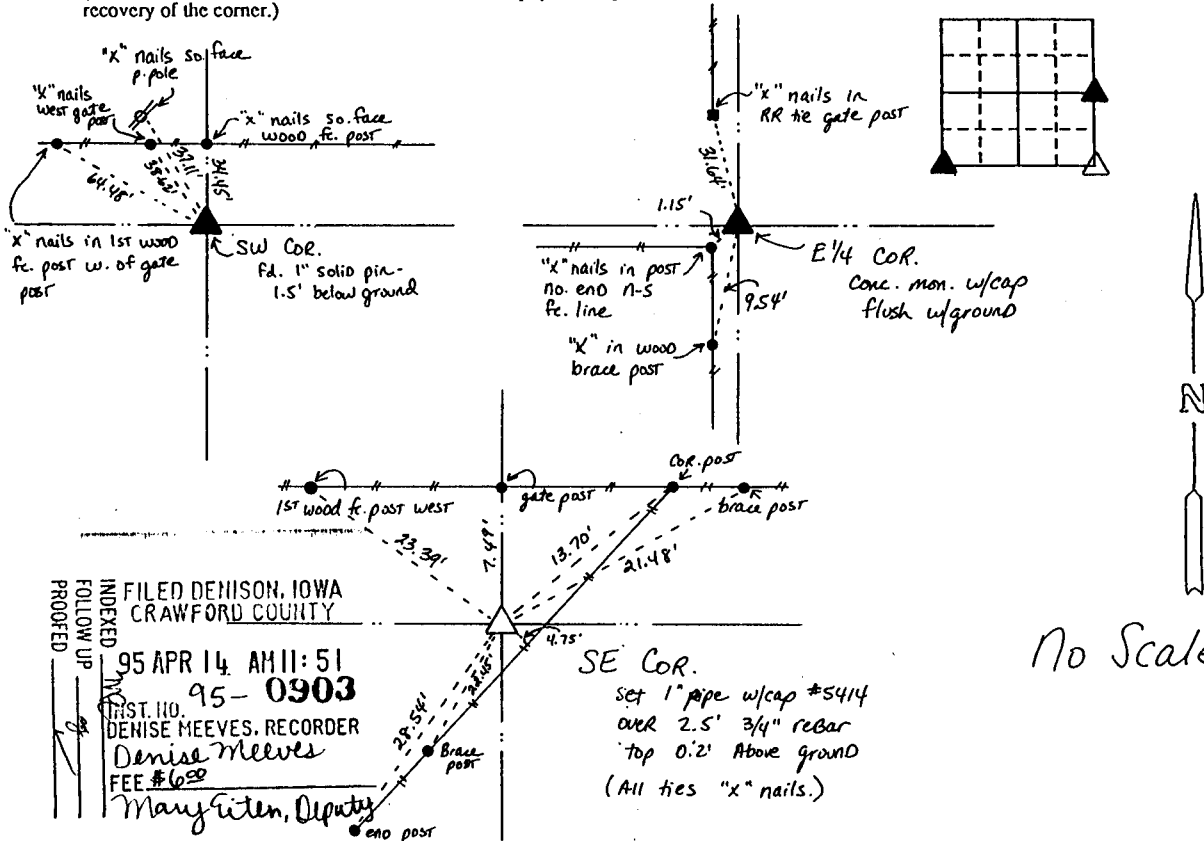
Land Survey Monuments situated in Section 36, Township 83, Range 41, of the Fifth Principal Meridian, Crawford County, Iowa. Previously recorded in \_\_\_\_\_ in County Recorder's Office.

(Show reason for preparing this certificate, the evidence and detailed procedures used in establishing the corner positions and monumentation found or placed.)

Monument Description and Remarks: \_\_\_\_\_

PLAN - VIEW

(Show a minimum of three reference ties to durable physical objects, relevant monuments and physical conditions that will enable recovery of the corner.)



FILED DENISON, IOWA  
CRAWFORD COUNTY  
95 APR 14 AM 11:51  
95-0903  
DENISE MEEVES, RECORDER  
Denise Meeves  
FEE \$600  
Mary Eiten, Deputy

No Scale

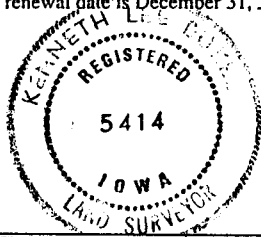
I hereby certify that the survey work was completed and this land surveying document was prepared by me or under my direct personal supervision and that I am a duly registered land surveyor under the laws of the state of Iowa

Signature: *Kenneth Lee Duker*  
Name typed or printed: KENNETH LEE DUKES

Date: April 6, 1995 Reg. No. IA 5414

My registration renewal date is December 31, 1995

SEAL



Corners	List Corners to be Indexed Section	Twp	Range
SW	36	83	41
E 1/4	36	83	41
SE	36	83	41