

FILED DENISON, IOWA  
CRAWFORD COUNTY

INDEXED MS  
FOLLOW UP MS  
PROOFED MS

97 APR 25 PM 3:17

INST. NO. 97-1083  
DENISE MEEVES, RECORDER

*Denise Meeves*  
FEE # 6.00 *Mary Giten, Deputy*

Prepared by KENNY'S SURVEYING, 3611 7th Avenue, Council Bluffs, IA (712) 323-3221  
UNITED STATES PUBLIC LAND SURVEY CORNER CERTIFICATE

OF

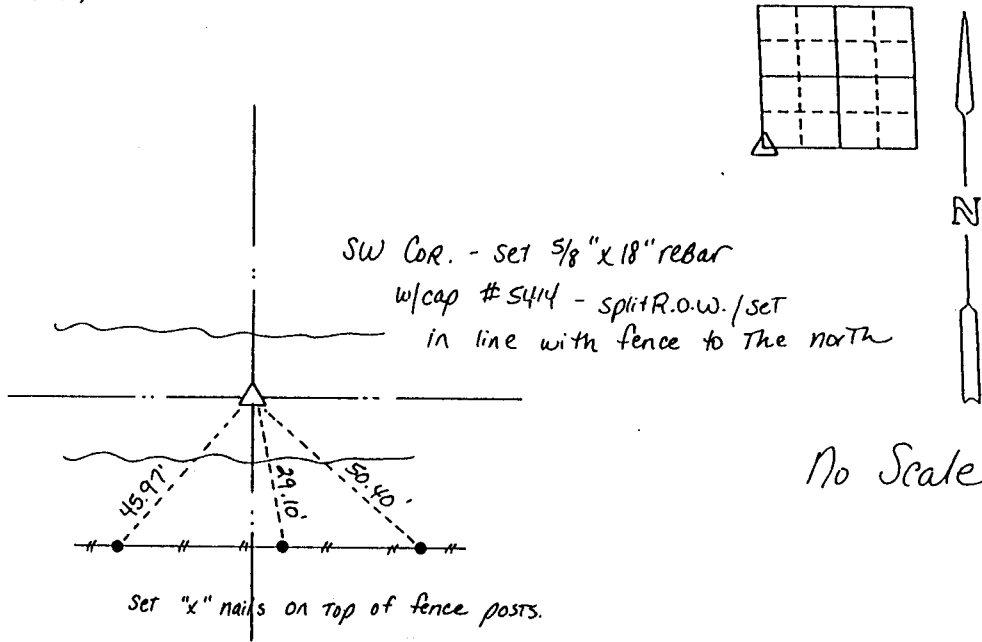
Land Survey Monuments situated in Section 30, Township 83, Range 40, of the Fifth Principal Meridian, Crawford County, Iowa.  
Previously recorded in \_\_\_\_\_ in County Recorder's Office.  
(book, page, document number, etc.)

(Show reason for preparing this certificate, the evidence and detailed procedures used in establishing the corner positions and monumentation found or placed.)

Monument Description and Remarks: \_\_\_\_\_

PLAN - VIEW

(Show a minimum of three reference ties to durable physical objects, relevant monuments and physical conditions that will enable recovery of the corner.)



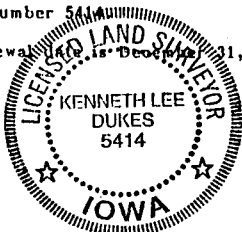
(field book 178 page 13) (Client: Hodkin)

LAND SURVEYOR'S CERTIFICATE:

I hereby certify that this land surveying document was prepared and the related survey work was performed by me or under my direct personal supervision and that I am a duly licensed Land Surveyor under the laws of the State of Iowa.

*Kenneth Lee Dukes* April 16, 1997  
Kenneth Lee Dukes Date

Iowa License Number 5414  
My license renewal is due on December 31, 1997.



Corners	List Corners to be Indexed		
	Section	Twp	Range
SW	30	83	40