

INDEXED mg
 FOLLOW UP mg
 RECORDED mg
 SCANNED BJ

Crawford County Recorder
 Denise Meeves
Fee Book 2008-3371
 12/17/2008 @12:07PM
 P.L.C. PLAT CORNER CER
 Book: Page: # Pages: 1
 Total Fees: \$0.00

PREPARED BY: MICKAEL F. BERNDT - CRAWFORD COUNTY ENGINEER'S OFFICE - COURTHOUSE - DENISON, IA. - 712-263-2449

**UNITED STATES PUBLIC LAND SURVEY CORNER CERTIFICATE
 OF**

**LAND SURVEY MONUMENT SITUATED IN WILLOW TOWNSHIP, THE WEST 1/4 CORNER
 OF SECTION 2, T-83N, R-41W OF THE FIFTH P.M. CRAWFORD COUNTY, IOWA.**

PREVIOUSLY RECORDED AS NO.

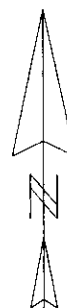
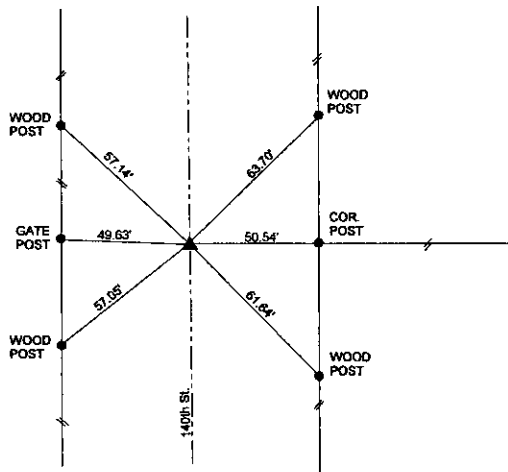
MONUMENT DESCRIPTION AND REMARKS

WEST 1/4 CORNER SEC. 2-83-41

DATE SET: 10-21-08

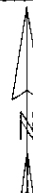
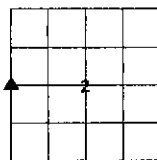
FOUND CARRIAGE BOLT TO SURFACE. THE BOLT WAS TIED OFF AND A 3" HMA OVERLAY WAS PLACED OVER EXISTING ASPHALT. USING PREVIOUS TIES A 1/2" DIA. X 4" CARRIAGE BOLT WAS SET BACK TO THE SURFACE.

WEST 1/4 CORNER SEC. 2-83-41



ALL DISTANCES ARE SLOPED CHAINED
 ALL TIES ARE "X" NAILS UNLESS NOTED.

CORNER: WEST 1/4
 SECTION: 2
 TOWNSHIP: 83N
 RANGE: 41W

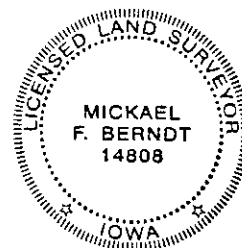


CERTIFICATION:

I HEREBY CERTIFY THAT THIS LAND SURVEYING DOCUMENT WAS PREPARED AND THE RELATED SURVEY WORK WAS PERFORMED BY ME OR UNDER MY DIRECT PERSONAL SUPERVISION AND THAT I AM A DULY LICENSED LAND SURVEYOR UNDER THE LAWS OF THE STATE OF IOWA.

Mickael F. Berndt
 Signature

10-21-08
 Date of Survey



MICKAEL F. BERNDT
 Typed Name

14808
 L.S. No.

Dec. 31, 2010
 License Renewal Date

Pages covered by this seal 1