

# UNITED STATES PUBLIC LAND SURVEY CORNER CERTIFICATE

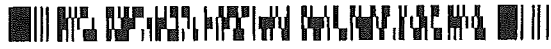
**Prepared by & Return to:** Joseph A. Snethen, P.L.S.  
 PH: 515-832-1876 Ryken Engineering & Land Surveying, Inc.  
 FAX: 515-832-1932 511 Bank St., Webster City, IA, 50595

INDEXED LM  
 FOLLOW UP \_\_\_\_\_  
 PROOFED \_\_\_\_\_  
 SCANNED \_\_\_\_\_

**Corners to be Indexed**

Corners	Section	Township	Range
N $\frac{1}{4}$ Corner	3	T83N	R41W
Center	3	T83N	R41W
S $\frac{1}{4}$ Corner	3	T83N	R41W
NE Cor. W $\frac{1}{2}$ SW $\frac{1}{4}$	3	T83N	R41W
SE Cor. W $\frac{1}{2}$ SW $\frac{1}{4}$	3	T83N	R41W
W $\frac{1}{4}$ Corner	3	T83N	R41W
SW Corner	3	T83N	R41W

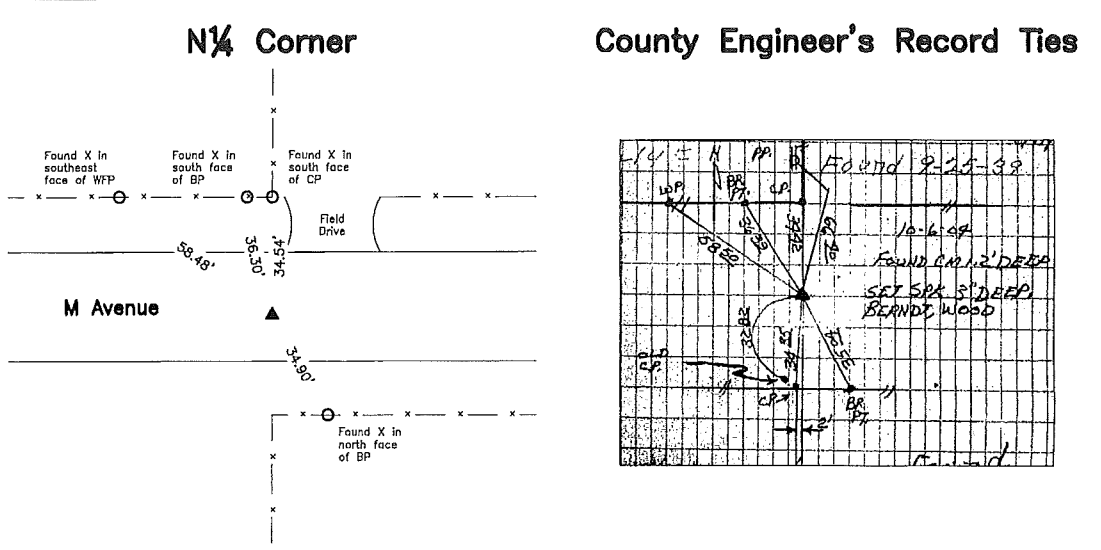
**Instrument #: 2017-2192**  
 11/13/2017 10:28:11 AM Total Pages: 4  
 PLC PLAT CORNER CER  
 Recording Fee: \$22.00 Transfer Tax: \$0  
 Denise Meeves, Recorder, Crawford County Iowa



Land Survey Monuments situated in Section 3, Township 83 North, Range 41 West of the Fifth Principal Meridian, Crawford County, Iowa, Previously recorded in (see below) in County Recorder's Office.

N $\frac{1}{4}$  Corner - Fee Book 2006-1956  
 All others - Not Applicable

These corners were used for a survey in this section for Kragel Farm Corporation. Basis of bearing for this corner certificate can be found on the associated plat of survey filed in the County Recorder's Office for this section.



- History of Corner =**
- 1883, Mar. 15 - "Old  $\frac{1}{4}$  Sec cor...Set Brick in Mound" per County Engineer's McHenry Field Book 35, Pages 13.
  - 1884, Apr. 14 - County Engineer's Survey Record Book, Page 154 indicates usage of corner, but not type of monumentation at corner.
  - 1884, Apr. 15 - County Engineer's Field Book 23, Page 50 indicates usage of corner, but not type of monumentation at corner.
  - 1907, Sep. 6 - "Brick taken and Set for Cor 3 Bricks...Set 3 Brick for Cor Top Brick Broken" per County Engineer's McHenry Field Book 57, Page 150.
  - 2006, June 7 - 'FND. 60d PENNY NAIL 6" DEEP NAIL IS DIRECTLY OVER C.M.' per County Recorder's Book 14, Page 23.
  - 2006, June 21 - 'FOUND 60d PENNY NAIL 6" DEEP. NAIL IS DIRECTLY OVER CONCRETE MONUMENT' per County Recorder's Fee Book 2006-1956.

County Engineer's ties indicate that corner is monumented with:

"Found 1 rock 2"x3"x4" brick bats 1 whole brick at a depth of 16" lowered and set C.M." on Sept. 25, 1939.  
 "found" on Sept. 1, 1953.  
 "OK" on May 22, 1957.  
 "FOUND CM 1.2' DEEP SET SPK 3" DEEP," on Oct. 6, 2004 with ties as shown above.

**Corner Recovery =**  
 Searched 5.0'  $\phi$  area with metal detector, excavated 2.5'  $\phi$  x 2.0' deep hole at magnetic reading and found 60d Iron nail, 0.7' deep. Tied out nail, removed it, and found 4" x 4" brass capped concrete monument, 1.7' deep. Concrete monument is 2.5'  $\pm$  south of apparent centerline of traveled surface of gravel road (east-west) and in-line with fence lines north and south. Location of monument found matches that of record, monuments found match that of record, and record ties are within reason. Therefore, set  $\frac{3}{4}$ "  $\phi$  x 1.0' aluminum capped iron rerod (#23133), over concrete monument to raise up monumentation and used it as the correct corner. Rerod is 0.7' deep. All ties are plumb distance unless indicated otherwise.

This certificate is being prepared because there are no longer three valid ties of record and there is a change to monumentation of record.



I hereby certify that this land surveying document was prepared and the related survey work was performed by me or under my direct personal supervision and that I am a duly licensed Professional Land Surveyor under the laws of the State of Iowa.

*Joseph A. Snethen*  
 JOSEPH A. SNETHEN, PLS  
 Date: 11.6.2017 License number: 23133  
 My license renewal date is December 31, 2018  
 Pages or sheets covered by this seal: 1, 2, 3 & 4

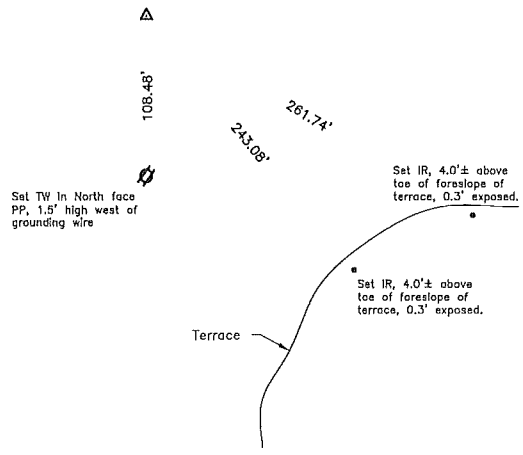
**Legend**

- BP = Brace Post
- CP = Corner Post
- GP = Gate Post
- IR =  $\frac{1}{2}$ "  $\phi$  x 2.0' Iron Rerod
- PP = Power Pole
- TW = Iron Nail with Round Metal Washer
- WFP = Wood Fence Post
- X = Iron "X" Nails

Page 1 of 4

3396

### Center



History of Corner =  
1883, Mar. 15 - "Br. OK Post 3 in by 18 in long Pit 8 lks N" per County Engineer's McHenry Field Book 35, Pages 13.

County Engineer's ties do not indicate that corner is monumented.

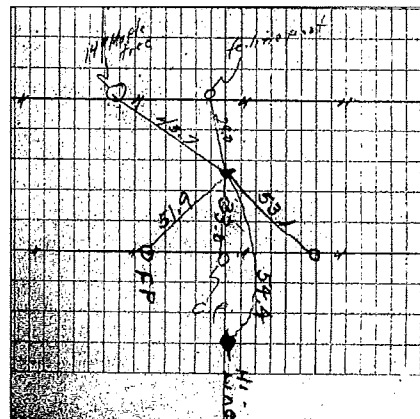
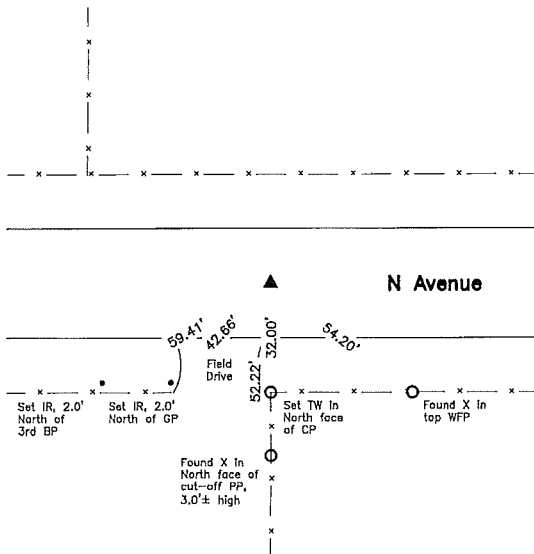
Corner Recovery =  
Searched 15'± area with metal detector, excavated 2.0'± x 2.5' deep hole at the proportionate point between the N¼ Corner and the S¼ Corner and found nothing. Also excavated a 3.0'± x 2.0' deep hole at a point 5'± South of said proportionate point and found nothing. Searched holes with tile probe to 4.0'± deep and found nothing. Having found no monumentation of record, set ¾"± x 4.0' aluminum capped iron rod (#23133), 1.0' deep at said proportionate point in accordance with previous survey and used it as the correct corner. All ties are plumb distance unless indicated otherwise.

This certificate is being prepared because there are no certificates on file for this corner.

### S¼ Cor.

### County Engineer's Record Ties

3397



History of Corner =  
1882, Apr. 26 - "Govt Cor Set New one Cedar Post & Brick Bats in Mound" per County Engineer's McHenry Field Book 14, Page 54.  
1883, Mar. 15 - County Engineer's McHenry Field Book 35, Pages 13 Indicates usage of corner, but not type of monumentation at corner.

County Engineer's ties indicate that corner is monumented with:

"Found brick bats ½ brick pieces of crockery at road surface Lowered set C.M." on May 13, 1940 with ties as shown above.

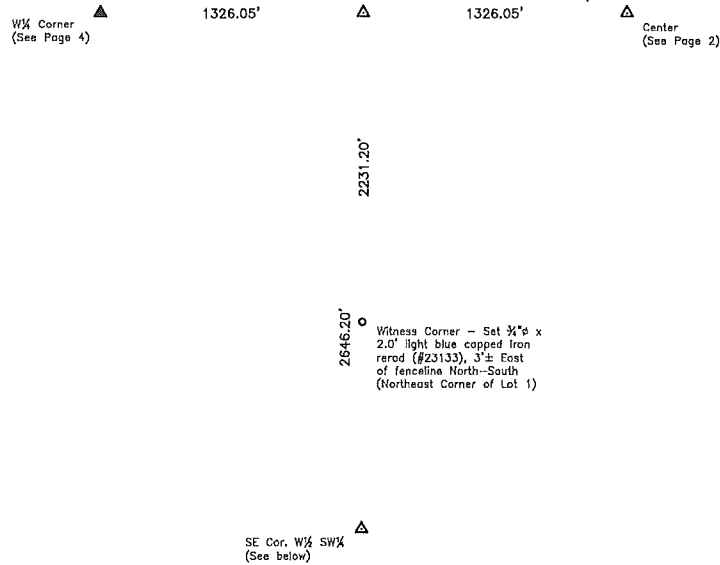
Corner Recovery =  
Searched 5.0'± area with metal detector, excavated 1.0'± x 0.6' deep hole and found 4" x 4" brass capped concrete monument, 0.4' deep. Concrete monument is in apparent centerline of traveled surface of gravel road east and dirt road west, in-line with fenceline south, and 56'± east of fenceline north. Location of monument found matches that of record, monument found matches that of record, and record ties are within reason. Therefore, used concrete monument as the correct corner. All ties are plumb distance unless indicated otherwise.

This certificate is being prepared because there are no certificates on file for this corner.



3398

### NE Cor. W $\frac{1}{2}$ SW $\frac{1}{4}$



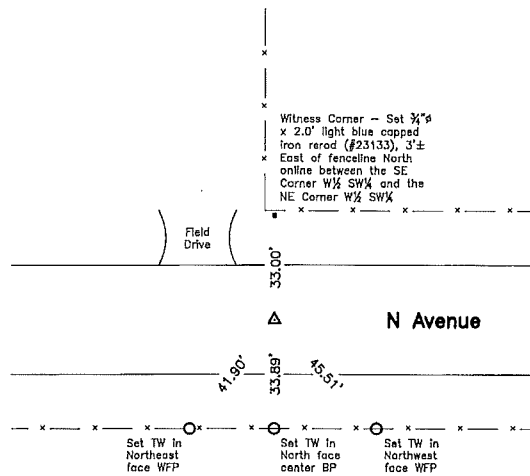
History of Corner =  
No available records indicate that corner was ever monumented.

Corner Recovery =  
Having no record of monumentation, set 3/4" x 4.0' aluminum capped iron rod (#23133), 1.0' deep equidistance between the W $\frac{1}{4}$  Corner and the Center in accordance with accepted PLSS methods and used it as the correct corner. All ties are plumb distance unless indicated otherwise.

This certificate is being prepared because there are no certificates on file for this corner.

### SE Cor. W $\frac{1}{2}$ SW $\frac{1}{4}$

3399



History of Corner =  
1882, Apr. 26 - "Set Cor. Corrected & Set Cedar Post Pit 8 Links West" per County Engineer's McHenry Field Book 14, Page 54.

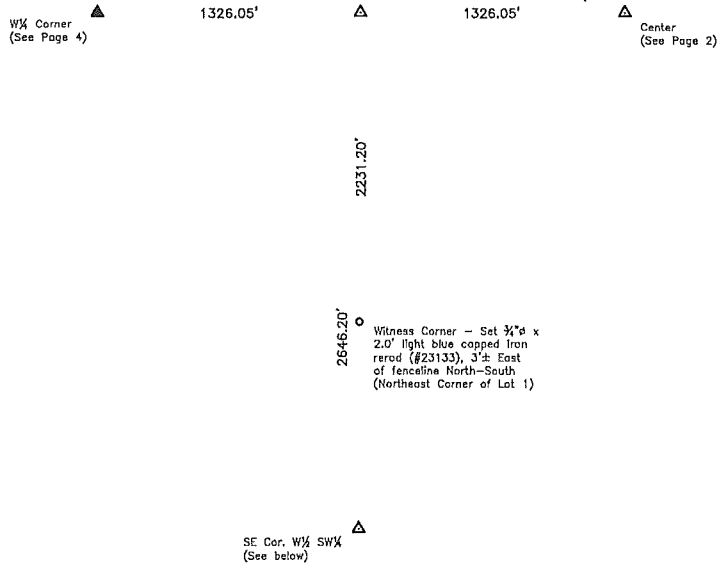
County Engineer's ties do not indicate that corner is monumented.

Corner Recovery =  
Searched 10' x 10' area with metal detector, excavated 3.0' x 2.0' deep hole at the intersection point of the apparent centerline of dirt road east-west and the fenceline north and found nothing. Also excavated 2.0' x 2.0' deep hole equidistance between the SW Corner and S $\frac{1}{4}$  Corner and found nothing. Searched holes with tile probe to 4.0'± deep and found nothing. Said point is in apparent centerline of traveled surface of dirt road east-west and 3.0'± east of fenceline north. Having found no monumentation of record, set 3/4" x 4.0' aluminum capped iron rod (#23133), 0.3' deep equidistance in accordance with accepted PLSS methods and used it as the correct corner. All ties are plumb distance unless indicated otherwise.

This certificate is being prepared because there are no certificates on file for this corner.

3398

### NE Cor. W $\frac{1}{2}$ SW $\frac{1}{4}$

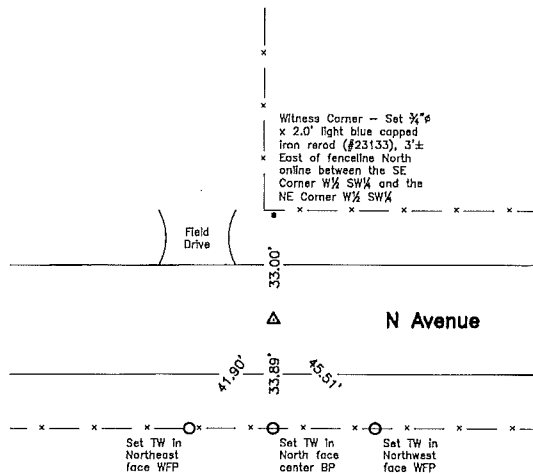


History of Corner =  
No available records indicate that corner was ever monumented.

Corner Recovery =  
Having no record of monumentation, set 3/4"  $\phi$  x 4.0' aluminum capped iron rod (#23133), 1.0' deep equidistance between the W $\frac{1}{4}$  Corner and the Center in accordance with accepted PLSS methods and used it as the correct corner. All ties are plumb distance unless indicated otherwise.

This certificate is being prepared because there are no certificates on file for this corner.

### SE Cor. W $\frac{1}{2}$ SW $\frac{1}{4}$



3399

History of Corner =  
1882, Apr. 26 -- "Set Cor. Corrected & Set Cedar Post Pit 8 Links West" per County Engineer's McHenry Field Book 14, Page 54.

County Engineer's ties do not indicate that corner is monumented.

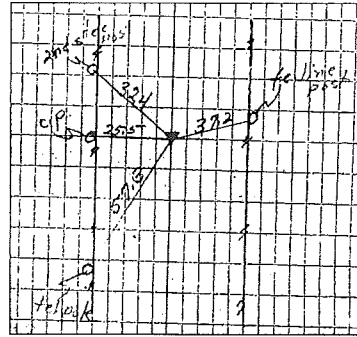
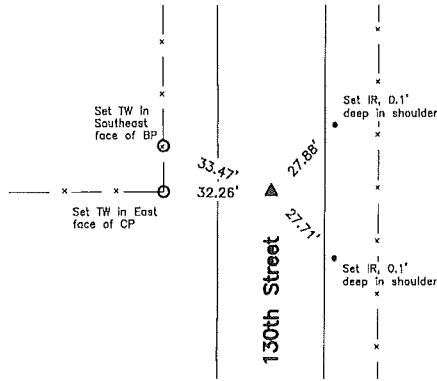
Corner Recovery =  
Searched 10'  $\phi$  area with metal detector, excavated 3.0'  $\phi$  x 2.0' deep hole at the intersection point of the apparent centerline of dirt road east-west and the fenceline north and found nothing. Also excavated 2.0'  $\phi$  x 2.0' deep hole equidistance between the SW Corner and S $\frac{1}{4}$  Corner and found nothing. Searched holes with tile probe to 4.0'  $\pm$  deep and found nothing. Said point is in apparent centerline of traveled surface of dirt road east-west and 3.0'  $\pm$  east of fenceline north. Having found no monumentation of record, set 3/4"  $\phi$  x 4.0' aluminum capped iron rod (#23133), 0.3' deep equidistance in accordance with accepted PLSS methods and used it as the correct corner. All ties are plumb distance unless indicated otherwise.

This certificate is being prepared because there are no certificates on file for this corner.

**W $\frac{1}{4}$  Cor.**

**County Engineer's Record Ties**

3400



**History of Corner =**

- No Date - "Set Post" per County Engineer's Survey Record Book, Page 32.
- 1883, Mar. 15 - "Cor Set Brick in Mound Pit 8 lks east no sign of old Cor" per County Engineer's McHenry Field Book 35, Pages 12-13.

County Engineer's ties indicate that corner is monumented with:

'Found 1 whole brick on end rotted wood stake at depth of 14" Lowered and set C.M.' on May 13, 1940 with ties as shown above.

**Corner Recovery =**

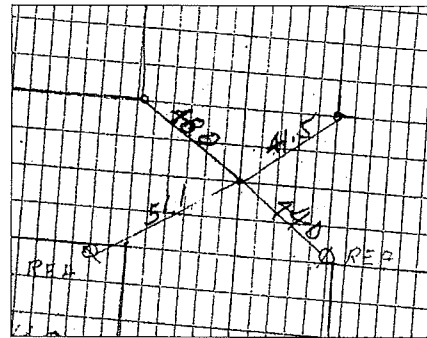
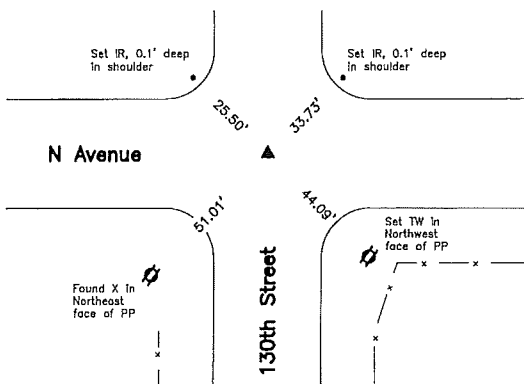
Searched 10'  $\phi$  area with metal detector, excavated 5.0' (east-west) x 3.0' (north-south) x 5.5' deep hole at reading and found 60d iron spike, 0.3' deep. Tied out spike, removed it and found 4" x 4" brass capped concrete monument, 5.2' deep with a 2"  $\pm$  irregularly shaped piece of brick on east side of concrete monument. Concrete monument is 1.0'  $\pm$  east of apparent centerline of traveled surface of gravel road north-south and in-line with fenceline west. Monument found matches that of record. Therefore, placed an orange plastic cased magnet on south side of concrete monument with said brick piece over it for locating purposes only, set  $\frac{3}{4}$ "  $\phi$  x 4.0' iron rerod on top of concrete monument, set 1" I.D. x 1.5' light blue capped iron pipe (#23133) over rerod to raise up monumentation and used pipe as the correct corner. Pipe is 0.3' deep. All ties are plumb distance unless indicated otherwise.

This certificate is being prepared because there are no certificates on file for this corner.

**SW Cor.**

**County Engineer's Record Ties**

3401



**History of Corner =**

- 1879, May 27 - County Engineer's McHenry Field Book 12, Page 142 indicates usage of corner, but not type of monumentation at corner.
- 1882, Apr. 26 - County Engineer's McHenry Field Book 14, Page 54 indicates usage of corner, but not type of monumentation at corner.
- 1883, Mar. 15 - "old govt" per County Engineer's McHenry Field Book 35, Pages 12.
- No Date - County Engineer's Survey Record Book, Page 32 Indicates usage of corner, but not type of monumentation at corner.
- 1901, June 6 - "Old govt Cor...Dug out old Govt stake & Set in place of same Iron Well or pump Casting 3 in Diamatter Brick Bats & old stake in side of Iron pump" per County Engineer's McHenry Field Book 51, Page 101.

County Engineer's ties indicate that corner is monumented with:

"Sought...dug 2'x10'15' center of intersection no find" on May 13, 1940.  
 "Dug 2 $\frac{1}{2}$ 'x12'x20' hole to ties from McHenry's Bk 51 - P. 100 found a few very small pieces of soft brick scattered in above hole. Seems cor has been destroyed by grader as cor has been cut badly." on May 3, 1941.  
 "Est. No CM Wood hub & Iron Pin" on May 18, 1957 with ties as shown above.

**Corner Recovery =**

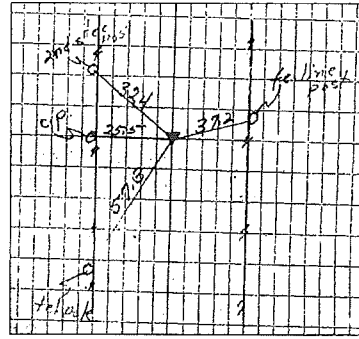
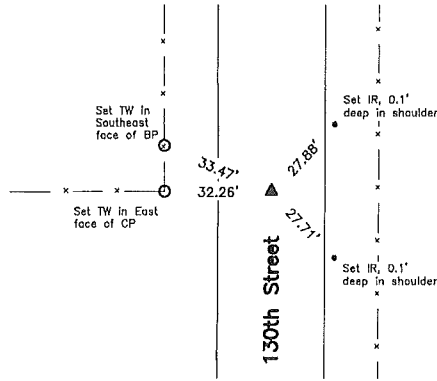
Searched 20'  $\phi$  area with metal detector, excavated 2.0'  $\phi$  x 2.5' deep hole at reading and found 60d iron nail, 2.2' deep. Tied out nail, removed it, searched area with metal detector, searched hole to 4.0' deep with tile probe, and found nothing else. Nail is in apparent centerline of traveled surface of dirt road east, 3.0'  $\pm$  north of apparent centerline of traveled surface of dirt road west, in apparent centerline of traveled surface of gravel road north, and 1.0'  $\pm$  east of apparent centerline of traveled surface of gravel road south. Record ties are within reason and nail is only monument available. Therefore, set  $\frac{3}{4}$ "  $\phi$  x 4.0' aluminum capped iron rerod (#23133), 0.4' deep at nail location to perpetuate monumentation and used it as the correct corner. All ties are plumb distance unless indicated otherwise.

This certificate is being prepared because there are no certificates on file for this corner.

3400

W $\frac{1}{4}$  Cor.

County Engineer's Record Ties



History of Corner =

- No Date - "Set Post" per County Engineer's Survey Record Book, Page 32.
- 1883, Mar. 15 - "Cor Set Brick in Mound Pit 8 lks east no sign of old Cor" per County Engineer's McHenry Field Book 35, Pages 12-13.

County Engineer's ties indicate that corner is monumented with:

'Found 1 whole brick on end rotted wood stake at depth of 14" Lowered and set C.M.' on May 13, 1940 with ties as shown above.

Corner Recovery =

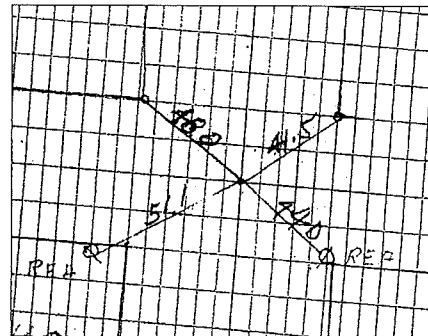
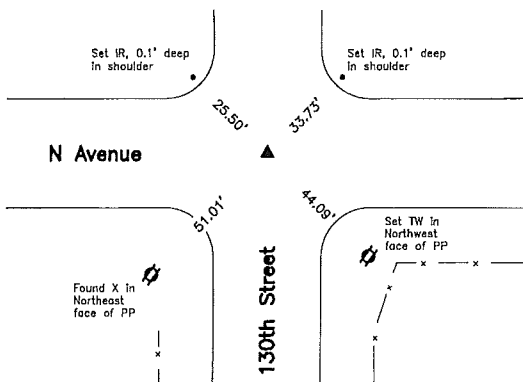
Searched 10' area with metal detector, excavated 5.0' (east-west) x 3.0' (north-south) x 5.5' deep hole at reading and found 60d iron spike, 0.3' deep. Tied out spike, removed it and found 4" x 4" brass capped concrete monument, 5.2' deep with a 2"± irregularly shaped piece of brick on east side of concrete monument. Concrete monument is 1.0± east of apparent centerline of traveled surface of gravel road north-south and in-line with fence line west. Monument found matches that of record. Therefore, placed an orange plastic cased magnet on south side of concrete monument with sold brick piece over it for locating purposes only, set 3/4" x 4.0' iron rod on top of concrete monument, set 1" I.D. x 1.5' light blue capped iron pipe (#23133) over rod to raise up monumentation and used pipe as the correct corner. Pipe is 0.3' deep. All ties are plumb distance unless indicated otherwise.

This certificate is being prepared because there are no certificates on file for this corner.

SW Cor.

County Engineer's Record Ties

3401



History of Corner =

- 1879, May 27 - County Engineer's McHenry Field Book 12, Page 142 indicates usage of corner, but not type of monumentation at corner.
- 1882, Apr. 26 - County Engineer's McHenry Field Book 14, Page 54 indicates usage of corner, but not type of monumentation at corner.
- 1883, Mar. 15 - "old govt" per County Engineer's McHenry Field Book 35, Pages 12.
- No Date - County Engineer's Survey Record Book, Page 32 indicates usage of corner, but not type of monumentation at corner.
- 1901, June 6 - "Old govt Cor...Dug out old Govt stake & Set in place of same Iron Well or pump Casting 3 in Diameter Brick Bats & old stake in side of Iron pump" per County Engineer's McHenry Field Book 51, Page 101.

County Engineer's ties indicate that corner is monumented with:

"Sought...dug 2'x10'15" center of intersection no find" on May 13, 1940.  
 "Dug 2 1/2'x12'x20' hole to ties from McHenry's Bk 51 - P. 100 found a few very small pieces of soft brick scattered in above hole. Seems cor has been destroyed by grader as cor has been cut badly." on May 3, 1941.  
 "Est. No CM Wood hub & Iron Pin" on May 18, 1957 with ties as shown above.

Corner Recovery =

Searched 20' area with metal detector, excavated 2.0' x 2.5' deep hole at reading and found 60d iron nail, 2.2' deep. Tied out nail, removed it, searched area with metal detector, searched hole to 4.0' deep with tile probe, and found nothing else. Nail is in apparent centerline of traveled surface of dirt road east, 3.0'± north of apparent centerline of traveled surface of dirt road west, in apparent centerline of traveled surface of gravel road north, and 1.0'± east of apparent centerline of traveled surface of gravel road south. Record ties are within reason and nail is only monument available. Therefore, set 3/4" x 4.0' aluminum capped iron rod (#23133), 0.4' deep at nail location to perpetuate monumentation and used it as the correct corner. All ties are plumb distance unless indicated otherwise.

This certificate is being prepared because there are no certificates on file for this corner.