

2001 OCT 26 AM 10:36

INST. NO. 2001-3047

DENISE MEEVES, RECORDER

Denise Meeves

FEE \$16.00

Mary Sitten, Deputy

INDEXED  
FOLLOW UP  
FILED

WARDER C. HILLHOUSE, JR. MHF ENGINEERING P.C. 300 W. MCKINLEY JEFFERSON, IA. (515)386-4101

### UNITED STATES PUBLIC LAND SURVEY CORNER CERTIFICATE OF

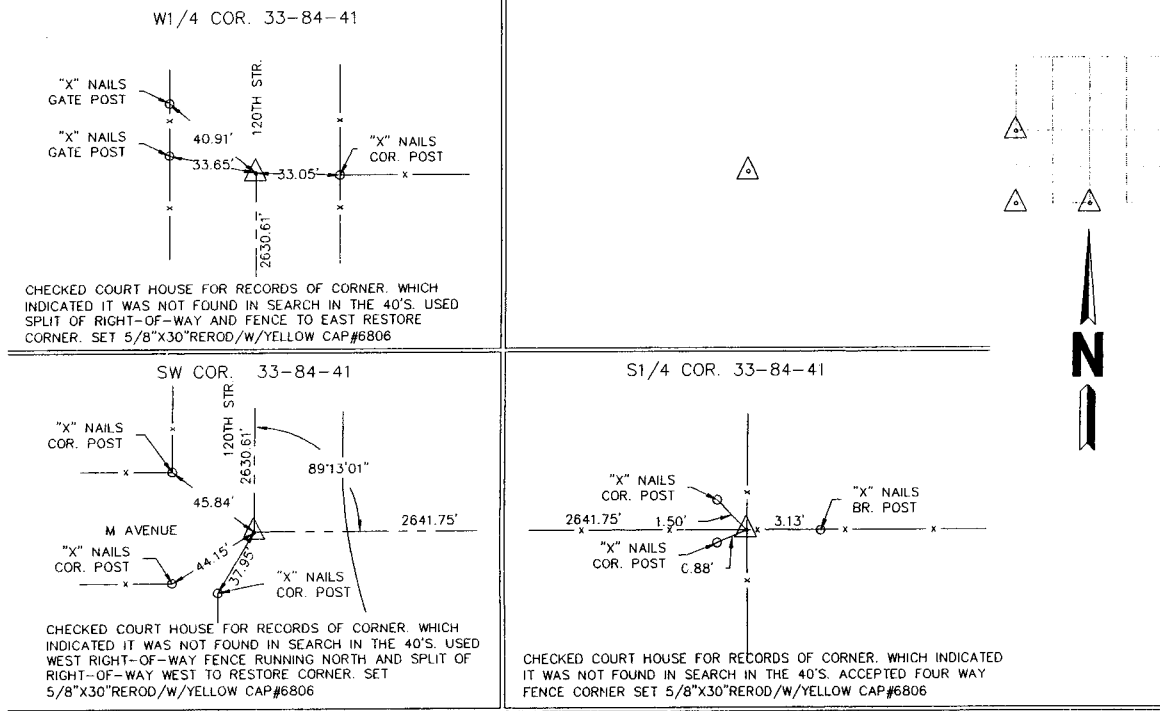
Land Survey Monuments in Section 33, Township 84, Range 41, of the Fifth Principal Meridian, CRAWFORD County, Iowa. Previously recorded in \_\_\_\_\_ in County Recorder's Office.

(Show reason for preparing this certificate, the evidence and detailed procedures used in establishing the corner positions and monumentation found or placed.)

Monument Description and Remarks: \_\_\_\_\_  
\_\_\_\_\_  
\_\_\_\_\_

### PLAN - VIEW

(Show a minimum of three reference ties to durable physical objects, relevant monuments and physical conditions that will enable recovery of the corner.)



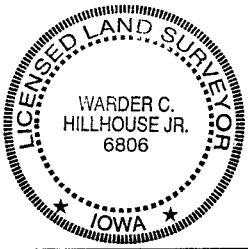
I hereby certify that land surveying document and the related survey work was performed by me or under my direct personal supervision and that I am a duly licensed land surveyor under the laws of the state of Iowa.

Signature: Warder C. Hillhouse, Jr.  
Name typed or printed: Warder C. Hillhouse, Jr.

Date: 10/24/01 Lic. No. 6806

License Renewal Dec. 31, 2001  
Date Surveyed: 10/01

Seal



List Corners to be Indexed

Corners	Section	Twp	Range
W1/4 COR.	33	84	41
SW COR.	33	84	41
S1/4 COR.	33	84	41

File No. 01194-1

M.H.F. ENGINEERING, P.C.  
ENGINEERS - LAND SURVEYORS  
Jefferson, Iowa 50129 Ph. (515)386-4101