



INDEXED DM
FOLLOW UP WJ
PROOFED WJ
SCANNED WJ

Crawford County Recorder Denise Meeves
FEE BOOK 2005-1936 7/18/2005 @ 04:07PM
PLC PLAT CORNER CERBook: Page:05-1936 #: 1
Total Fees: \$7.00

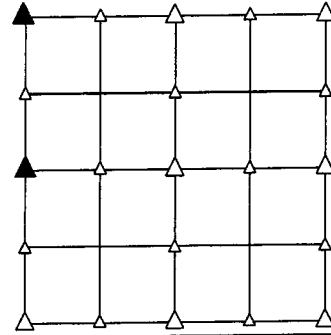
PREPARED BY - TERENCE E. CRAWFORD - SUNDQUIST ENGINEERING - 120 S. MAIN, DENISON, IOWA 51442 - PHONE (712) 263-8118

UNITED STATES PUBLIC LAND SURVEY CORNER CERTIFICATE OF

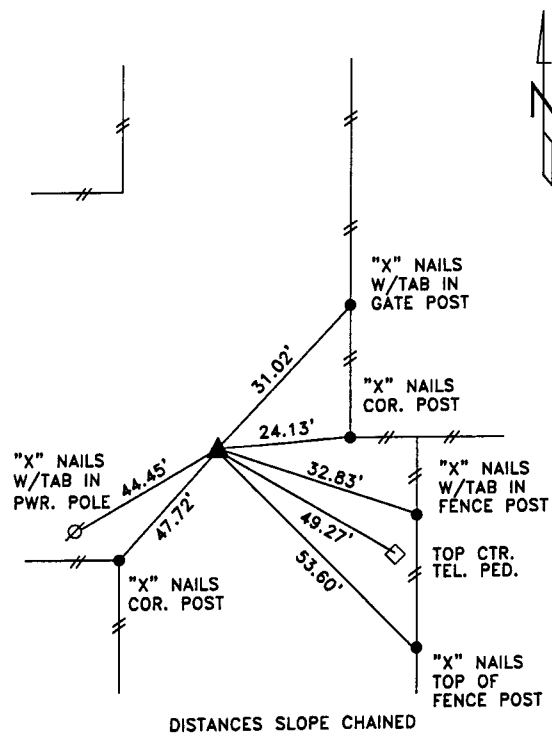
LAND SURVEY MONUMENT SITUATED IN SECTION 6, T 83 N, R 41 W OF THE 5TH P.M., CRAWFORD COUNTY, IOWA. PREVIOUSLY RECORDED IN BOOK _____, PAGE _____, OTHER _____

MONUMENT DESCRIPTION AND REMARKS

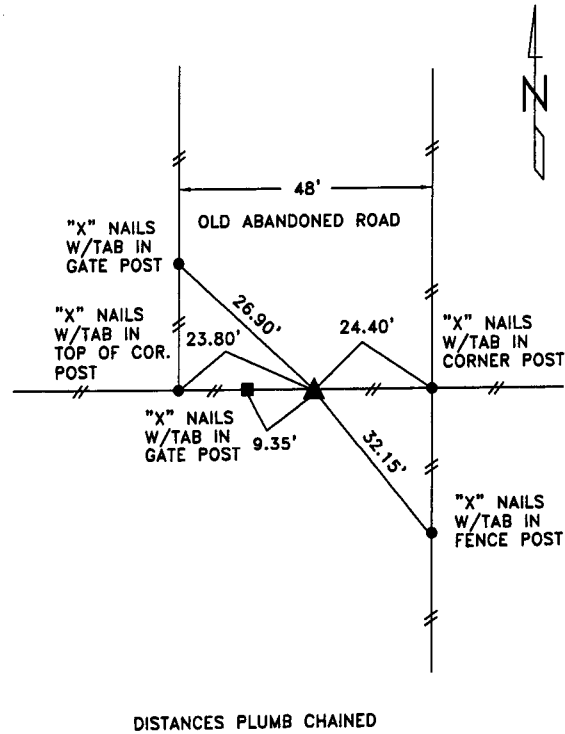
NW CORNER - FOUND 1 1/2" DIA. AXLE 0.5' DEEP.
W1/4 CORNER - FOUND 1 1/2" DIA. AXLE 0.5' DEEP.



PLAN VIEW SHOWING RELATIVE LOCATION OF MONUMENT AND REFERENCE POINTS.



NW CORNER SECTION 6-83-41



W1/4 CORNER SECTION 6-83-41

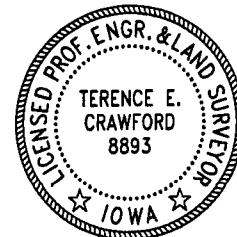
I HEREBY CERTIFY THAT THIS LAND SURVEYING DOCUMENT WAS PREPARED AND THE RELATED SURVEY WORK WAS PERFORMED BY ME OR UNDER MY DIRECT PERSONAL SUPERVISION AND THAT I AM A DULY LICENSED LAND SURVEYOR UNDER THE LAWS OF THE STATE OF IOWA.

Terence E. Crawford

JUL 12 2005

TERENCE E. CRAWFORD
IA LICENSE NO. 8893

DATE
EXP. DATE DECEMBER 31, 2005



SE PROJECT NO. 23605
DRAWN BY: LLL