

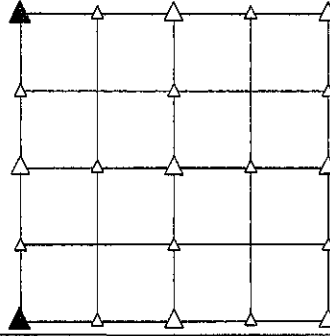
PREPARED BY - JOSEPH P. RUESCHENBERG - SUNDQUIST ENGINEERING - 120 S. MAIN, DENISON, IOWA 51442 - PHONE (712) 263-8118

UNITED STATES PUBLIC LAND SURVEY CORNER CERTIFICATE OF

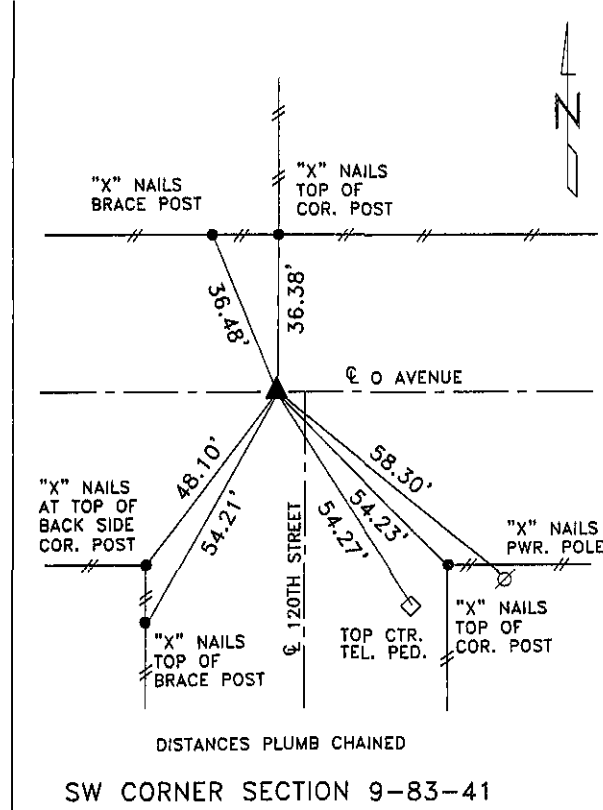
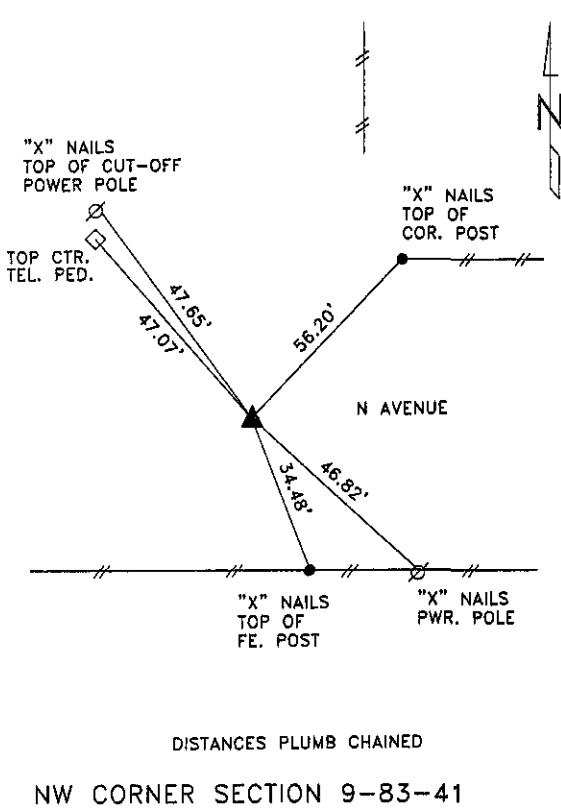
LAND SURVEY MONUMENT SITUATED IN SECTION 9, T 83 N, R 41 W OF
 THE 5TH P.M., CRAWFORD COUNTY, IOWA.
 PREVIOUSLY RECORDED IN BOOK _____, PAGE _____, OTHER _____

MONUMENT DESCRIPTION AND REMARKS

NW CORNER - FOUND BROKEN CM 2.3' DEEP W/PIECES OF BRICK
 & 6" X 6" ROCK, RAISED WITH 5/8" DIA. X 18" IRON
 PIN W/ORANGE CAP #14709 0.8' DEEP.
 SW CORNER - SET 5/8" DIA. X 18" IRON PIN W/ORANGE CAP
 #14709 0.6' DEEP, RESET FROM OLD COUNTY TIES.



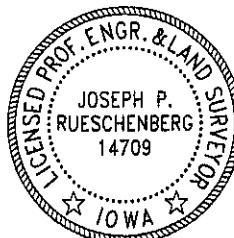
PLAN VIEW SHOWING RELATIVE LOCATION OF MONUMENT AND REFERENCE POINTS.



I HEREBY CERTIFY THAT THIS LAND SURVEYING DOCUMENT WAS PREPARED
 AND THE RELATED SURVEY WORK WAS PERFORMED BY ME OR UNDER MY
 DIRECT PERSONAL SUPERVISION AND THAT I AM A DULY LICENSED LAND
 SURVEYOR UNDER THE LAWS OF THE STATE OF IOWA.

Joseph P. Rueschenberg **OCT 29 2007**
 JOSEPH P. RUESCHENBERG DATE

IA LICENSE NO. 14709 EXP. DATE DECEMBER 31, 2008



SE PROJECT NO. 24907
 DRAWN BY: LLL