

INDEX \_\_\_\_\_  
 SCAN \_\_\_\_\_  
 FOLLOW UP \_\_\_\_\_  
 PROOF \_\_\_\_\_

Instrument #: 2023-0339  
 02/22/2023 09:24:48 AM Total Pages: 1  
 PLC PLAT COR CERT  
 Recording Fee: \$0.00 Transfer Tax: \$0  
 Sara Meseck, Recorder, Crawford County Iowa



PREPARED BY: PAUL ASSMAN-CRAWFORD COUNTY ENGINEER'S OFFICE-COURTHOUSE-DENISON, IA.-712-263-2449

UNITED STATES PUBLIC LAND SURVEY CORNER CERTIFICATE  
 OF

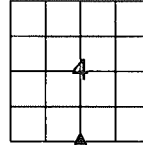
LAND SURVEY MONUMENT SITUATED IN OTTER WILLOW TOWNSHIP, SOUTH 1/4 CORNER OF SECTION 4, T-83N,  
 R-41W OF THE FIFTH P.M. CRAWFORD COUNTY, IOWA.

PREVIOUSLY RECORDED IN WILLOW TWP. FIELD BOOK PG.19, COUNTY ENGINEERS OFFICE

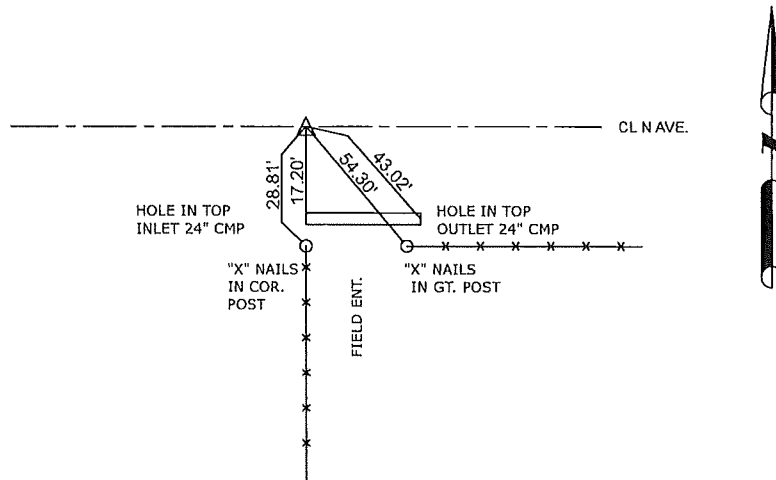
MONUMENT DESCRIPTION AND REMARKS

SOUTH 1/4 CORNER SEC. 4-83-41

DIDN'T FIND BROKEN CONC. MONMENT-LIKELY LOST DUE TO  
 SIGNIFICANT LOWERING OF ROAD GRADE OVER TIME. COUNTY  
 GRADED ROAD AND SET 5/8" X 18" REBAR WITH RED CAP#  
 11982 1.0' DEEP USING 4 EXISTING TIE DISTANCES FOUND IN  
 COUNTY ENGINEERS OFFICE WILLOW TWP. BOOK PAGE 19.  
 CORNER POSITION CORRELATES WELL WITH SURVEY  
 MONUMENTS FOUND ON SURVEY 2007-2916.



SOUTH 1/4 CORNER SEC. 4-83-41



ALL TIE DISTANCES ARE MEASURED HORIZONTALLY USING GPS

CERTIFICATION:

I HEREBY CERTIFY THAT THIS LAND SURVEYING DOCUMENT WAS PREPARED AND THE RELATED SURVEY  
 WORK WAS PERFORMED BY ME OR UNDER MY DIRECT PERSONAL SUPERVISION AND THAT I AM A DULY  
 LICENSED LAND SURVEYOR UNDER THE LAWS OF THE STATE OF IOWA.

Signature

2/17/23  
 Date of Survey

PAUL J. ASSMAN  
 Typed Name

11982  
 L.S. No.

12-31-24  
 License Renewal Date

Pages covered by this seal 1

